

# THE KIPPY GAZETTE

Spring 2017

## A LETTER FROM THE DIRECTORS



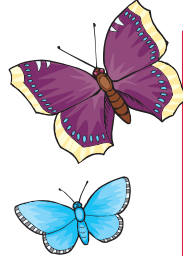
Greetings, Kippewa families!

Somehow, once again, we suddenly find ourselves with just a few weeks before camp begins. How does the time go by so quickly each year?! Steve and Brittany are up at camp getting things ready and preparing for staff training. Ginger will be joining them soon! Please

send all of your forms and payments directly to Maine now so they don't get lost anywhere in the transition.

Speaking of forms... if you haven't taken care of your required forms for the summer yet the time is now! We need to have everything on file now, before camp begins, in order to have time to read through it and make the necessary preparations for everyone's arrival. Our nurses need to know the conditions and medications to expect, our counselors want to know as much about each child as possible, and we need to know how your daughters and their bags are getting to camp! Campers will be able to select their activities for the first week of camp in June so check your emails for notification when that is posted. We know everyone is excited to make those choices!

We have included a lot of information for you in this newsletter. Please read through it all carefully and let us know if you have any questions. We can't wait to see you all very soon.



## WHAT'S INSIDE

Costume and Library Call .....	2
Lice Policy Treatment Reminder.....	2
Summer Photos Upgrade .....	2
The First Day of Camp.....	3
World of Change .....	3
Meet Our Amazing Staff .....	4-7
GrUVy Wear .....	7
Spring Fling .....	8
Kippewa Turns 60 .....	9
Leaders in Training.....	9
Camper Get-Togethers .....	9
Enhanced Programs.....	10
Package Policy Reminder .....	11
Medication/Vitamin Policy Reminder .....	11
Important Dates.....	Back



WARMLY, *Ginger & Steve*

## myKippewa Reminder



If you have not yet completed your daughter's forms, please login to your myKippewa account and submit them to us! When filling out your daughter's Travel and Baggage form, please be as detailed as possible. We want to make sure that we know exactly how she will be arriving at camp! If you have any specific details that you need to discuss, please feel free to contact us. Any forms should be mailed to our summer address in Maine. **Camper Forms were due on May 1st.**

## WE MOVED UP TO CAMP!

We are happily settling into life in Maine. Please send all correspondence to our Summer Address:



**Camp Kippewa  
1 Kippewa Drive  
Monmouth, Maine 04259**

# Costume & Library Call



Since we began our Kippy library a few years ago, we have watched the selection grow through generous donations from our Kippewa Families and staff. The Library has become a popular part of our camp culture! We are excited to add even more to our already extensive collection in order to provide even more selections for Kippy girls to read each summer. If you have old books hanging around, and would like to see them find a happy new home...think of us! We will happily take them off your hands.

.....

We are always looking for additions to our costume department, we need your help! Before turning that old prom dress into rags or tossing out Grandpa's plaid jacket, please send it to us at camp. We welcome any clothing and/or accessories that you would like to share with our playhouse. Kippy's future thespians appreciate your help!



## LICE POLICY & TREATMENT REMINDER

When campers arrive at camp their first stop is to check in with the nurses to make sure medical records and medications are intact, and to get their heads checked. We have once again partnered with Lice Treatment Center, a professional company, to take care of this inspection. We will have Kippewa staff members on-hand as well to visualize any positive findings. **We have a "no nit" policy at Kippewa.** This means if we see even one nit in a child's hair they are required to be treated - it is too difficult for us to be in a position of deciding whether the nit is "live" or not and we don't want to risk bringing lice into camp. While lice isn't harmful, it is a nuisance and spreads quickly especially in a camp environment. The staff from Lice Treatment Center will treat anyone who arrives with nits and/or live lice using their oil-based treatments and through extensive combing. There will also be follow up comb-outs and oil treatments for 5-7 days. **We will contact you if your daughter is found to have lice or nits upon arrival, and Kippewa will bill parents \$395 for any lice treatment required.** For more information on Lice Treatment Center and their treatment methods go to their website [www.licetreatmentcenter.net](http://www.licetreatmentcenter.net).

Please make sure you thoroughly check your daughter before she heads off to camp. While we will do our best to make her comfortable and supported, it is never a great welcome to camp spending time being treated for lice while everyone else settles in. If you are interested in having your child professionally checked before camp and you live in the CT or NYC areas, Lice Treatment Center is available. They charge an hourly rate of 125 per hour with a 1-hour minimum. Please contact them directly at 888-542-3292 (888-LICE-AWAY) if you are interested and make sure to mention your daughter attends Kippewa.

## Summer Photos Upgrade



We are excited to announce an upgrade to the photo system we use to share pictures with parents while camp is in session. **We have agreed to help test the beta version of CampMinder's new facial recognition software!** This feature has been a common request from camp families. When you sign in to view photos this summer there will be a personalized folder with photos of your daughter(s) already marked for you to view. This folder will also contain some additional photos that we have selected to give you an overall idea of what went on at camp that day (for instance, if it is a big special event day we will make sure you see some of those special event photos even if your daughter isn't in them). You will also still have access to the full database of pictures that we post so you can spend additional time browsing through the photos if interested.

This is a new program and we decided to jump on board in the early days to help test and give feedback. You will also be asked for feedback at the end of the summer by CampMinder directly (the company that operates our myKippewa database). We are very hopeful this will make everyone's photo viewing experience even better than in previous years!

# THE FIRST DAY AT CAMP

We understand that the first day of camp can be a little scary for some of you and we want the transition to be as great as possible. Here is a little rundown on what you should expect on that first day. The staff at Kippewa will be so excited to meet you! By the time you arrive, they will have already been at camp for a whole week (and some even longer) in preparation to meet you and plan for your arrival. Whether you arrive on a camp bus or by car, when you first drive into camp, you will meet your bunk counselors and some of your bunkmates. You'll then head over to The Pillbox (our Health Center) where our wonderful nurses will do a quick general health check and you will get your head checked by the eagle-eyed technicians from Lice Treatment Center. After that, together with your bunk counselors and bunkmates, you will head to your bunk to begin unpacking and settle in.

Your bunk will be decorated and we assign beds ahead of time so you don't need to worry about claiming one or be worried about how you will choose. Once you are settled and unpacked, your counselors will help you make your bed and put your clothes away. The afternoon will be filled with playing get-to-know you games and tours of camp.



For dinner, the whole camp will come together in The Lodge to eat and you will sit with your bunkmates and counselors. Once we all finish eating our traditional first meal of Pizza and Kippy Cookies, you'll get a little glimpse of true Kippy spirit as we all dance and sing in The Lodge (a true Kippewa tradition!) to welcome the Summer of 2017!

After dinner, everyone will be introduced to their Camp Sisters. Camp Sisters are in many ways an instant friend, and if it is your first summer at Kippy, you are placed with someone who has been to camp before. They can help teach you about camp traditions and help make sure that you are loving camp just as much as they are. Together with your camp sister, you will participate in our first evening activity: World Records. Many different activities will be set up around camp (by this point, you will really start knowing where everything is), and with your camp sister you will try and set the "World Record" in different silly games!

By the end of Evening Activity, it will be time to head back to your bunk for bedtime. You will surely be exhausted and ready for a good night of sleep! If you find you are a little bit nervous or sad while you are adjusting to camp try not to worry, it's normal and common, and your counselors will be there ready to help.

Hopefully you now have an idea of what to expect when you arrive. Most importantly, don't be afraid to ask questions; we are here to help! We can't wait to see you all in Maine!

We are excited to partner this summer with the rest of the MCE (Maine Camp Experience) camps to support the World of Change organization. **You can help by bringing your loose change from home to donate to this great cause.** Kippewa campers and staff will get to decide where the funds we bring in will be donated. You can find more information about this program online at: <https://www.worldofchange.world>. *100% of the funds collected go directly to programs with partners who are doing life-changing work in the areas of housing, food security, education, financial literacy, health and wellness, and children's play. Private donors and sponsors cover our operating costs so 100% of your money can make change.*

**Start collecting your change now!**



**Bring your change to camp, we will have collection jars ready upon arrival!**

There's an estimated \$10 billion in loose change sitting idle in American households – that's \$90 per household! World of Change is on a mission to put that change to good use.

- 100% of collected change goes to established programs and partners supporting housing, food security, financial literacy, childhood literacy, health and wellness, and children's play.
- All operating costs are covered by private donors, foundations and sponsors, ensuring that 100% of your change can make change.
- The benefits extend far beyond the recipients of change; World of Change engages youth in understanding citizenship, the powers they have as individual change agents, and their capacities for local and global impact.



**Be a change maker.**

Inspire kids and adults alike to make change with our Change Kits.

**Schools:** Classrooms, sports teams and clubs are great ways to engage students in friendly coin collection competitions.

**Summer Camps:** Incorporate change collection into athletic events, arts & crafts activities or as part of a camp kick off/welcome event.

**Businesses + Community Groups:** Play up your industry/focus and remind customers that spare change is everywhere. Offer to match their contribution or provide a special gift/discount for donating their coins. Co-branded kits can be given as gifts to employees, members and customers as a feel-good way to say thanks.

#### Donate

- Contribute to a matching challenge
- Sponsor a matching challenge
- Choose your own amount to donate
- Sponsor a Change Kit
- Sponsor our kiosk at the Portland, ME Jetport

# MEET OUR AMAZING STAFF!



## MIKE DAVIS - TENNIS DIRECTOR

Mike is Kippewa's very own King of the Courts where he reigns over our 6 all-weather hard courts. Mike's enthusiasm, love for sports, and friendship with the campers and staff are the reason why Mike is making his 16th trip to Maine from

Kingston, Jamaica. He began his camping career just down the street at Camp Cobbossee, but when Kippy was looking for a Tennis Director, he knew that was where he needed to be! A faculty member at The Queens Preparatory School in Kingston, Jamaica, Mike teaches physical education as well as tennis to children ages 6-12 in the winter (well, if you can call it winter down in sunny Jamaica). He is also a tennis pro, offering lessons to adults and children throughout the year. Mike's giant smile and infectious laugh make him a huge part of life at Kippewa. There is no doubt that after taking a tennis lesson with Mike, you will be hooked!



## MEISHA BOOTH - ROPES DIRECTOR

Meisha comes to us from New Zealand. This will be her 3rd summer in her favorite home away from home. She has 9 years of climbing experience and 7 years of coaching. She has traveled all over Europe on various climbing adventures and can't

wait to get back to camp to see all the old and new faces and bring new, fun, and exciting challenges to camp!



## MARGARET STOCKARD - TRIPS DIRECTOR & SPECIAL DIETS COORDINATOR

2017 will be summer number nine for Margaret. She began her Kippy adventure as a bunk counselor and has held many hats over the past few years from teaching tennis

and creative writing to being a Division Head, Special Events Coordinator, Communications Coordinator, and Staffing Director. She currently assists with marketing and various design and writing projects on a year round basis, and this summer she will be stepping into a brand new area as the Trips Director, Special Diets Coordinator and all around Kitchen Liaison! She originally hails from Sweet Home Alabama (Roll Tide!) but spent a few years up north in the Boston area until setting in Richmond, Virginia. She studied English in college and has a strong passion for youth development and also the Oxford comma! She hopes to continue to share those passions year after year. She cannot wait to get back to Maine and see old faces and meet new ones. You might find her sporting some neon by the lake, writing a poem, or creating some tunes on her djembe at the campfire!



## MARY PAIGE KOWALSKI - EQUESTRIAN DIRECTOR

Growing up in Cameron, South Carolina, Mary Paige spent every summer going to camp, starting in 2nd grade up through her senior

year of high school. Once in college, she couldn't just leave summer camps as a thing of her past so she became a camp counselor. This summer will be her 23rd summer at camp and her 13th summer running an Equestrian Program (9th year at Kippewa!). Mary Paige loves Kippewa because it reminds her of what camp was like when she was a camper. She had her first pony ride at a zoo in Canada when she was five and was then hooked! She rode on the South Carolina Progressive Show Jumpers Circuit just before college and then rode at Clemson University on their Equestrian team, where she also served as team president and earned her degree in Equine Business. She has recently become a Level III Certified Horsemanship Association Instructor and is eager to bring her level of expertise to the Kippy Stables for another great summer. Mary Paige conveniently lives just 10 miles from camp and can't wait to be back with her daughter, Elizabeth, and her son, AJ!



## NICOLE MILLER - LANDSPORTS DIRECTOR

Nicole is excited to be joining Camp Kippewa for year three and this will be her first as our Landsports Director. During the year, Nicole teaches K-12 music, including band and choir, in Iowa. She has played basketball, softball, and cross country, and has also coached track and field. Nicole is

absolutely excited to make landsports fun and challenging for all the girls who come to camp. You will find her on Fenway North knocking softballs in the outfield and hearing her around camp saying "Fire Up Chips."

Continued on next page....



**ALAN CLARE - WATER SKI DIRECTOR**

Aidan, Brett, and Courtney's "Poppa," Alan, will be joining us for his 10th season heading up the water ski program at Kippewa, which he affectionately calls his favorite place on Earth. Alan hails from New

Zealand where he has been coaching and competing in water skiing at national and international levels for many years. He won a number of age group national barefoot water ski titles himself but realized later that his real talent was in coaching. He coached Steve (Kippewa Director) to two New Zealand national titles before being asked to coach the New Zealand barefoot water ski team, a position he held for 15 years. Upon retiring from that position he returned to coaching children, guiding three young skiers to world championship level. Don't worry, he also knows the basics, including water skiing with one or two skis and even using a wakeboard! Alan believes "if it's not fun, it's not worth doing." His infectious "Kiwi" humor means everyone has fun while learning!



**MATT MANDEL - PROGRAM DIRECTOR**

Matt can't wait to begin his 5th summer at Kippewa. A National Board Certified Teacher, Matt has received the School District of Philadelphia's top awards for

teaching excellence in addition to recognition and honors at both the state and national levels. This year he received the 2017 B'nai B'rith Educators Service to the Profession Award. Whether helping to plan and coordinate an exciting menu of Free Choice and Options Day experiences or capturing each camp day in words for our online parent blog, Matt brings a lot of spirit and energy and more than 30 years of professional classroom and overnight camping experience to our wonderful leadership team!



**SHELLEY BONIWELL - SCHEDULER**

Shelley is excited to be joining the Kippewa family for the first time this summer as our activity scheduler! She lives in sunny San Diego and has never been to Maine. She can't wait to experience all Maine has to offer. During

the year, Shelley is a School Counselor at The Grauer School in Encinitas and she absolutely loves what she does. She is very passionate about working with kids and helping them navigate school life! When she's not enjoying working with her students, she spends time outdoors, at the beach, hiking, swimming and traveling. She also enjoys spending time with her family (especially her nieces and nephews), reading and volunteering.



**ELLA BRAKEFIELD - HEAD COUNSELOR**

Back for summer number 8 it's Ella! Ella is our head counselor and is super excited about flying over to Maine in June. She originates from just north of London but lives in Scotland, where she works for an international summer

camp staffing agency. Ella started off at camp working in the equestrian program with Mary Paige and loves to spend her time with her horse, Echo when in Scotland. Her favourite thing to do at camp is watching the play auditions, playing gaga and chilling out at camp fires!

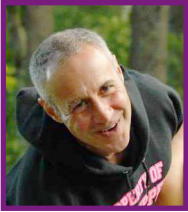


**CARA SCHWEERS - ASSISTANT HEAD COUNSELOR**

Cara can't wait to start her 4th summer at Kippewa! This summer she is excited to step into the role of Assistant Head Counselor. In the past Cara has served as the Lower Senior Division Head and an archery

instructor. Her favorite part of Kippewa is seeing how much all the campers change for the better over the course of the session and become part of something greater than themselves .

Cara just graduated with her Master's in Teaching from the University of Virginia, #wahoowa, and is excited to begin her teaching career after camp. She already has a job as a high school math teacher lined up! Cara has always loved working with kids, but attributes her first summer at Kippewa for inspiring her to become a teacher. When she's not in class, Cara helps out at camp's winter office and loves spending her lunch breaks hanging with the Clare kiddos.



**RICHARD STEGMAN - PERFORMING ARTS DIRECTOR**

Richard Stegman is joyfully returning to Camp Kippewa for his 10th summer this year. From 2008 through 2012, he was the Performing Arts Director, and the

in the following years worked with Special Events, Assisting the Directors and as the Lower Senior Assistant, as well as Co-Director of Family Camp. He lives in New York City where he works as a photographer, caterer, website consultant and meditation instructor.

.....



**SUZANNE THIBEAULT - VISUAL ARTS DIRECTOR**

Suzanne is thrilled to join Camp Kippewa for her first summer! She comes to you from the Live Free or Die state (NH), though she grew up outside of Boston. She brings

a wealth of knowledge in the world of Art and Education after spending five years teaching, and before that, grabbing a Masters and Bachelors in Art Education. She also will be sharing her positivity and enthusiasm with the crew, most likely through song. As the daughter of a music teacher/ director/ minister, Suzanne is far from quiet! In her spare time, she enjoys participating in community theatre, open mics, hiking, and of course, making art.

.....



**JOCELYN DOWLING - WATERFRONT DIRECTOR**

Jocelyn is happy to be joining us again for her 6th summer here at the Kippewa Waterfront. Jocelyn has grown up around the water whether it be canoeing, kayaking or swimming. She has been a lifeguard since she was 15 years

old and a competitive swimmer since she was 7. Jocelyn's swimming career brought her to University of Guelph where she competed nationally for 5 years while earning her Degree in Human Kinetics and Sports Injury Management. She went on to become the Head Athletic Therapist at Mount Allison University and spends her off season rehabilitating athletes and their injuries. Her own family of little campers will also be spending their summer either with us at Kippewa or at our brother camp Cobbossee. They are a very active bunch who

enjoy everything about camp. Jocelyn and her kids really grew up in the wonderful world of camping. She has filled many roles in the camping industry from counselor and swim instructor, to Group Leader, Head Counselor, Pool Director and finally landed her dream position as Waterfront Director.

.....



**KIMBERLY PARIS - OFFICE MANAGER**

The friendly voice on the other end of the Kippewa line this summer will belong to Kimberly Paris. Kimberly

attended Kippewa as a "tween" and is thrilled to be back again for her 3rd summer managing our office. As a mom, she brings energy, enthusiasm and an understanding of what it feels like to be a parent on the other end of the line. An MBA from NYU and over 25 years of event and project management experience assure us that she will have the office organized so we can concentrate on the campers and Kippewa fun! Originally from South Florida, Kimberly now lives in Westport, CT where she represents MaineCampExperience.com as a Campcierge™ and is very active in the school and on the PTA Board. Both Kimberly and her daughters, Samantha & Sabrina, can't wait to be back at their Kippewa home away from home!

.....



**DEBBIE VILARDI - HEAD NURSE**

Debbie is not only our RN in residence for her 17th season, but she is a dear friend to all Kippewa families. Debbie works hard taking care of all of us. If

we need a hug or are feeling under the weather, a quick trip to the Pillbox will fix all. Debbie graduated from nursing school at Casanovia College in New York State. She has homeschooled all of her children and they have either gone on to serve in the military, attain a degree in college, or jump start a career. She recently relocated from Pennsylvania to South Carolina and cannot wait to make the trek back up north to Maine. Her passion and love for people shines everywhere she goes!

.....



**GEMMA SHORT - SPECIAL EVENTS COORDINATOR**

Gemma is very excited to be heading back to the Kippy bubble for her 6th summer. Back in 2012, she joined the Kippewa team working in the Ropes program. She was then a nanny for two summers and was also our Trips Coordinator for a summer. This year will be her second year as a Special Events Coordinator and she is excited to dive back in! Gemma graduated with a degree in Primary Education and is now a full-time teacher and loves being around young people all year long. She is literally counting the days until she is back in Maine and dancing to "Hey Juliet" in the Lodge!



**JACKIE MANDEL -PARENT COMMUNICATIONS DIRECTOR**

Jackie brings considerable skill and experience to her role in Kippy's office and operations department.

Following a 17-year career in college administration, Jackie earned a second Master's degree and became a full-time teacher in Philadelphia in 2008. Jackie was the Association for Continuing High Education's Educator of the year in 2005 and is a member of the Phi Beta Kappa Honor Society. She has a love (and a talent) for musical theatre and has extensive summer camp leadership experience, in addition to a few summers as a camper herself!

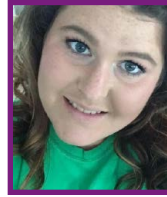


**BRITTANY BRUENING - OPERATIONS DIRECTOR**

Brittany is back for summer number six this year as the Operations Director! She has previously been involved with Dance, Ceramics, and was the

previous Visual Arts Director, and is excited to be a part of Kippewa in a brand new way this summer. Some of her favorite Kippy moments include dancing in the Lodge and watching the talented campers perform at campfire each week! Brittany received her BFA focusing in Ceramics and Printmaking from the University of Wisconsin Madison. Go Badgers! When she isn't working hard in the winter office, she loves to spend free time dancing, making art, and spending with friends. Last year she made the move

from Milwaukee, Wisconsin to Charlottesville, Virginia and although she misses home sometimes, she does not miss the harsh winters!



**KAYLEE SPENCER - BARN MANAGER**

Coming to Kippewa from Oregon, Kaylee will be returning for her 4th at camp and her 2nd summer as Barn Manager. She has sixteen years of riding experience, both competing and giving lessons. She can't wait to get back to the happiest place on earth and see all of the smiling faces, both new and old.



**BG FERNER - GYMNASTICS DIRECTOR**

BG is 27 years old, was born in the US but grew up in Germany, where she currently lives and works. She did gymnastics at an elite level for almost 10 years and was part of the German Junior National Team

Squad for 3 years. Starting out as a coach in recreational gymnastics in 2006, she is now coaching girls aged 8-17 at an elite level and received her high performance coaching certificate this year. She is super excited to get to lead the expanded gymnastics program this year in our brand new gymnastics facility, and can't wait for her second year at Camp Kippewa!

Are you frustrated trying to get sunscreen on your kids?

Protect them from harmful UVA/UVB Rays, in and out of the water with **UPF 50+ UV Protective Wear!**

**SPECIAL PROMOTION FOR CAMP KIPPEWA FAMILIES:**

**camp Kippewa** **Camp Special Save 20%**

for girls LIMITED TIME OFFER!

More Colors online in sizes Youth XS/4 - Adult XXXL



Order at: [gruvywear.com](http://gruvywear.com)

Click on Camp Orders and enter your camp name. Enter Save2017 at checkout to receive 20% discount or call toll free at 1-855-go-grUVy to order.

# SPRING FLING!!!

On May 7th, new and returning Kippewa girls met up in New York for our annual "Kippewa Spring Fling." It was a great opportunity for returning campers to reunite, new campers to meet other girls coming to camp, and for everyone to get to know some of our amazing staff. Everyone enjoyed playing human Bingo as an opening ice breaker, and then we broke into teams for a fun Alphabet Game - even the parents and siblings got involved! We celebrated a few birthdays in the typical cake-throwing Kippy style, and talked about the upcoming summer. New friendships were formed, old friends were reunited, and Kippewa girls enjoyed a great introduction to camp. It made all of us even more excited for the summer!





# CAMP KIPPEWA TURNS 60!

~ July 27, 2017 ~

Can you believe it? This year marks Camp Kippewa's 60th Summer! We are very excited to share this important milestone with our whole camp family. Over the last 6 decades, many campers, staff, and families have enjoyed spending a summer on the shores of Lake Cobbosseecontee, singing songs by the campfire, performing plays in the Playhouse, dancing in the Lodge, and most importantly making lifelong friends and memories. Alongside Kippewa's 60th Birthday, 2017 marks Ginger and Steve's 10th summer as Directors! Over the past decade, they have worked hard to continue the spirit and traditions of Kippewa while also bringing their own unique experiences and backgrounds with them. To commemorate these camp benchmarks, Kippewa will be having two birthday parties this summer, one each session! During our second session celebration we will be inviting all alumni to celebrate with us on July 27th for an afternoon Carnival followed by a cookout and fireworks over the lake. Whether you joined our camp family in 1958, 1985, 2009, 2017, or somewhere in between, we are excited to celebrate this exciting time with you!



## Kippewa Leaders in Training!

We are very excited to announce the start of a **Leaders in Training** Program at Kippewa, in cooperation with Zeal Travel and Adventure, beginning summer 2018! This program will be for our recently graduated OCs, girls entering 11th grade. So 2017 OCs, we hope you join us to kick off this exciting new addition to Kippewa!

The girls will join us at camp for the first few days of the session and then they will embark on a travel adventure to an exotic location together with teens of the same age from some other camps we know and trust. Kippewa staff will remain with them the entire time. After 2 weeks of travel, adventure, service, and leadership training the girls will return to Kippewa for a few more days to help teach some activities and will end their program with our lobster bake and a special LIT campfire. To begin we will only run this program to correspond with our first session dates but it is open to girls who have attended either session.

We have had numerous requests over the years to expand our program to include girls beyond their OC summer and we are very excited about this new opportunity. We hope you are too! More details will be coming out soon.

## CAMPER GET-TOGETHERS



**Nicole M. and Sami S.** meet up to have lunch at Miami Beach!



**Maya D.** in her Kippy gear getting excited for camp this summer!



**Jessica C., Mirabelle H., and Diana H.**, sport some awesome Kippy clothes for a sleepover in Boston!



# ENHANCED PROGRAMS AT KIPPEWA!

## Summer 2017

### GYMNASTICS AND DANCE

This year's campers will be the first to enjoy our New Gymnastics Facility and New Dance Studio! Finishing touches are still being put on both spaces as we speak.

Built as an addition to the Pavilion, the new Gymnastics Building will boast a full size competition spec sprung floor along with beam, uneven bars, a new vaulting system and a 30' long Tumbl Trak "Air Floor."

Our Dance program moves into the newly renovated space previously used for Gymnastics. With a new state of the art sprung hardwood dance floor this beautiful new space will give the dance program twice as much space!



*New gymnastics addition.*



*New dance studio awaiting its floor.*

---

### NEW SAIL BOATS!

Interest in our sailing program continues to increase. To meet demand we have expanded the Kippy fleet for 2017. Two new Laser Pico's join our current fleet of Picos and 420's. Students learn the basics in the extremely simple to sail Picos, before moving up to the more advanced 420 racing dinghies as used in collegiate sailing programs in America.



---

### EXPANDED ROPES COURSE!

Kippewa campers will enjoy two new high ropes elements this year. With the addition of a new state of the art "LobsterClaw" self belay system campers will be able to seamlessly traverse all our high ropes elements in a single session while being belayed constantly. More time in the air and less time setting up = more fun!

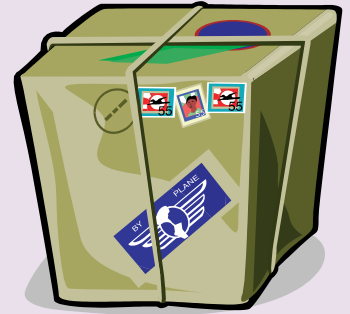


***We can't wait to enjoy all of these new additions with you this summer!***

# PACKAGE POLICY REMINDER

We would like to ask for your support in following our package policy. Please inform friends and family members as well, we find they are often the most frequent “offenders”!

We very intentionally restrict the size and contents of packages sent to campers. Hearing from parents through letters and emails is very meaningful for the girls and we don’t see the need for excessive “stuff” or food. We don’t have the space in the cabins and we want to avoid any feeling of competition or needing to keep up with everyone else. We really appreciate your cooperation!



We allow “packages” to be sent in Priority Mail or FedEx sized envelopes (9x12) only. It is okay to include camp friendly items such as stationery, age appropriate magazines and stickers but please do not send any food, bunk gifts (gifts for everyone in the bunk) or other similar items. **We do not allow boxed packages. This includes items sent directly from an outside vendor such as Amazon.** If you need to send a larger essential item (such as forgotten shoes or bedding), please email [office@kippewa.com](mailto:office@kippewa.com) with the subject line “Package Approval Request.” All unapproved boxes will not be opened and will be returned to sender or held until the end of camp. All large envelopes and pre-approved boxes will be opened by our staff, and any food or restricted items will be confiscated. The only exception to the package size-restriction is for birthdays during camp. Please call us if you plan on sending a birthday package. Food items and bunk gifts (gifts for everyone in the bunk) are not permitted in birthday packages.

## MEDICATION/VITAMIN POLICY REMINDER

We have received numerous questions about using CVS for medications and vitamins. CVS packages medications specially for our camp health center so our staff aren’t dealing with opening bottles and dispensing the right amounts when distributing meds to our campers. They pre-package medications / vitamins sent to them in bubble packs by time of day. Their system helps our nurses spend their time more efficiently (focusing on your children instead of focusing on bottle caps!) and increases safety in the distribution and administration of all medications.



**Campers with prescription medication or vitamins that will be taken during the summer must be dispensed through CVS Pharmacy’s medication distribution system. This applies to all pill-form medication and vitamins that campers take regularly.** A letter is available in your myKippewa account regarding the procedures with CVS. CVS will ship your daughter’s medication and daily vitamins directly to camp before camp opens. Any medication not covered by CVS, such as liquid medication, drops, and inhalers must be sent to camp one week prior to arrival day. If your insurance won’t allow you to use CVS or you have any other issues please contact us directly.

As a reminder, all medication including ointments and creams (only exceptions are inhalers and epi-pens) must be kept in the health center. Please inform us if your daughter needs to keep an inhaler with her. Any self-administered medication, such as inhalers, require a parent and doctor’s signature on the Self Administer Emergency Medication Form. Please send two inhalers and/or epi-pens with your daughter (one for her to keep with her and one to be kept in the health center.)



1 Kippewa Drive  
Monmouth, Maine 04259



## IMPORTANT DATES SUMMER 2017

**1st SESSION**..... Thursday, June 22 - Sunday, July 16  
**FIRST VISITING DAY**.....Sunday, July 16  
**2nd SESSION**..... Wednesday, July 19 - Saturday, August 12  
**SECOND VISITING DAY**.....Saturday, August 12  
**FAMILY CAMP**..... Sunday, August 13 - Friday, August 18

**Get Ready for Another  
Awesome Kippy Summer!**

[www.kippewa.com](http://www.kippewa.com) • 1-800-547-7392