

THE KIPPY GAZETTE

Spring 2018

A LETTER FROM THE DIRECTORS



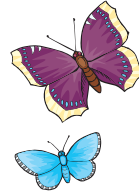
Greetings, Kippewa Families!

Even though it isn't June 21st yet, as far as we are concerned the summer has officially begun! Steve and Brittany have moved up to camp together with some of our dedicated staff members getting things ready for everyone's arrival. We are busy cleaning up the grounds (raking, mowing, trimming, weeding, planting, and more!), re-painting buildings, fixing damage from the storms and wintery weather, turning on the water (yes, we turn it off when camp finishes in the fall!), collecting forms, planning bunks, helping staff make their way to camp, and more! It's a busy time for us but it's also a very exciting time because the final countdown has begun. We can't wait to see everyone at camp very soon!

If you haven't taken care of your forms and travel plans yet please submit those to us as soon as possible. It's hard for us to plan how many buses and vans and chaperones are needed if we don't know how many campers are taking our buses, or when they are arriving at the airport. We know it's a lot to sort through but we also must have the medical forms and medications in-hand before camp begins in order to be ready for everyone's arrival. We appreciate your help in taking care of things in a timely manner!

We hope you are getting excited about camp. We know this is a time of year where the emotions run strong. Excitement, anxiety, nervousness, questions - all of these things are normal and expected. Check out the article in this newsletter about the first day and what to expect upon arrival at camp. Check out the videos on our website giving you information about arrival day, programs, what the campers are like, and more. And let us know how we can help. We can't wait to see you up in Maine!

WARMLY, *Steve & Brit*



WHAT'S INSIDE

Costume and Library Call	2
Lice Policy Treatment Reminder	2
Program Updates.....	2
Tick Prevention Update	2
The First Day of Camp.....	3
World of Change	3
Meet Our Amazing Staff	4-8
Spring Fling	9
Camper Get-Togethers	10
Technology Add-On	10
Facial Recognition Software in Photos.....	10
Package Policy Reminder	11
Medication/Vitamin Policy Reminder	11
Important Dates.....	Back

myKippewa Reminder



If you have not yet completed your daughter's forms, please login to your myKippewa account and submit them to us! When filling out your daughter's Travel and Baggage form, please be as detailed as possible. We want to make sure that we know exactly how she will be arriving at camp! If you have any specific details that you need to discuss, please feel free to contact us. Any forms should be mailed to our summer address in Maine.

Camper Forms were due on May 1st.

WE MOVED UP TO CAMP!

We are happily settling into life in Maine. Please send all correspondence to our Summer Address:



**Camp Kippewa
1 Kippewa Drive
Monmouth, Maine 04259**

Costume & Library Call



Since we began our Kippy library a few years ago, we have watched the selection

grow through generous donations from our Kippewa Families and staff. The Library has become a popular part of our camp culture! We are excited to add even more to our already extensive collection in order to provide even more selections for Kippy girls to read each summer. If you have old books hanging around, and would like to see them find a happy new home... think of us! We will happily take them off your hands.

.....

We are always looking for additions to our costume department, we need your help! Before turning that old prom dress into rags or tossing out Grandpa's plaid jacket, please send it to us at camp. We welcome any clothing and/or accessories that you would like to share with our playhouse. Kippy's future thespians appreciate your help!



LICE POLICY & TREATMENT REMINDER

When campers arrive at camp their first stop is to check in with the nurses to make sure medical records and medications are intact, and to get their heads checked. We have once again partnered with Lice Treatment Center, a professional company, to take care of this inspection. We will have Kippewa staff members on-hand as well to visualize any positive findings.

We have a "no nit" policy at Kippewa. This means if we see even one nit in a child's hair they are required to be treated - it is too difficult for us to be in a position of deciding whether the nit is "live" or not and we don't want to risk bringing lice into camp. While lice isn't harmful, it is a nuisance and spreads quickly especially in a camp environment. The staff from Lice Treatment Center will treat anyone who arrives with nits and/or live lice using their oil-based treatments and through extensive combing. There will also be follow up comb-outs and oil treatments for 5-7 days. **We will contact you if your daughter is found to have lice or nits upon arrival, and Kippewa will bill parents \$395 for any lice treatment required.** For more information on Lice Treatment Center and their treatment methods go to their website www.licetreatmentcenter.net.

Please make sure you thoroughly check your daughter before she heads off to camp. While we will do our best to make her comfortable and supported, it is never a great welcome to camp spending time being treated for lice while everyone else settles in. If you are interested in having your child professionally checked before camp and you live in the CT or NYC areas, Lice Treatment Center is available. They charge an hourly rate of 125 per hour with a 1-hour minimum. Please contact them directly at 888-542-3292 (888-LICE-AWAY) if you are interested and make sure to mention your daughter attends Kippewa.

PROGRAM UPDATES

We are thrilled to be bringing yet another new program to Kippewa: **Fencing!** This was another popular option from our fall camper survey and we can't wait to get started. We think it will be an exciting addition to our programming. We are also thrilled to announce that together with some landscape work at the waterfront, we are **upgrading Crow's Nest!** Get ready for a bigger changing room for the campers down by the lake!

TICK PREVENTION UPDATE:

One of our favorite things about the summer is getting to experience the beautiful outdoors of Maine! The lake, the trees, the loons...it's really hard to beat! We realize, however, that with this beautiful outdoor haven comes some concerns such as ticks. We have always sprayed and treated the camp grounds as a preventative measure, but starting in 2017 we partnered with Ivy Oaks Analytics to increase the coverage. This year we have partnered with them again and have the most extensive coverage yet. Our staff are trained on symptoms to look out for and are also trained on how to lead the campers through tick checks. We especially emphasize checks after hiking/outdoor trips. We can't wait to be back outside in our favorite place for the summer! **Please see enclosed flyer for more details.**

THE FIRST DAY AT CAMP

We understand that the first day of camp can be a little scary for some of you and we want the transition to be as great as possible. Here is a little rundown on what you should expect on that first day. The staff at Kippewa will be so excited to meet you! By the time you arrive, they will have already been at camp for a whole week (and some even longer) and they can't wait to meet you! Whether you arrive on a camp bus or by car, when you first drive into camp you will meet your bunk counselors and some of your bunkmates. You will then head over to The Pillbox (our Health Center) where our wonderful nurses will do a quick general health check and you will get your head checked by the eagle-eyed technicians from Lice Treatment Center. After that, together with your bunk counselors and bunkmates, you will head to your bunk to begin unpacking and settle in.

Your bunk will be decorated and we assign beds ahead of time so you don't need to worry about claiming one or be worried about how you will choose. Once you are settled and unpacked, your counselors will help you make your bed and put your clothes away. The afternoon will be filled with playing get-to-know you games and tours



of camp. For dinner, the whole camp will come together in The Lodge to eat and you will sit with your bunkmates and counselors. Once we all finish eating our traditional first meal of Pizza and Kippy Cookies, you'll get a little glimpse of true Kippy spirit as we all dance and sing in The Lodge (a true Kippewa tradition!) to welcome the Summer of 2018!

After dinner, everyone will be introduced to their Camp Sisters. Camp Sisters are in many ways an instant friend, and if it is your first summer at Kippy, you are placed with someone who has been to camp before. They can help teach you about camp traditions and help make sure that you are loving camp just as much as they are. Together with your camp sisters, you will participate in our first evening activity: World Records. Many different activities will be set up around camp, and together you will try and set the "World Record" in different silly games! By the end of Evening Activity, it will be time to head back to your bunk for bedtime. You will surely be exhausted and ready for a good night of sleep! If you find you are a little bit nervous or sad while you are adjusting to camp try not to worry, it's normal and common, and your counselors will be there ready to help. Hopefully you now have an idea of what to expect when you arrive. Most importantly, don't be afraid to ask questions; we are here to help!

WE CAN'T WAIT TO SEE YOU ALL IN MAINE!

We are excited to partner once again this summer with the rest of the MCE (Maine Camp Experience) camps to support the World of Change organization. You can help by bringing your loose change from home to donate to this great cause. Kippewa campers and staff will get to decide where the funds we bring in will be donated. You can find more information about this program online at: <https://www.worldofchange.world>. 100% of the funds collected go directly to programs with partners who are doing life-changing work in the areas of housing, food security, education, financial literacy, health and wellness, and children's play. Private donors and sponsors cover our operating costs so 100% of your money can make change

Start collecting your change now!



There's an estimated \$10 billion in loose change sitting idle in American households - that's \$90 per household! World of Change is on a mission to put that change to good use.

- 100% of collected change goes to established programs and partners supporting housing, food security, financial literacy, childhood literacy, health and wellness, and children's play.
- All operating costs are covered by private donors, foundations and sponsors, ensuring that 100% of your change can make change.
- The benefits extend far beyond the recipients of change; World of Change engages youth in understanding citizenship, the powers they have as individual change agents, and their capacities for local and global impact.



Bring your change to camp, we will have collection jars ready upon arrival!



Be a change maker.

Inspire kids and adults alike to make change with our Change Kits.

Schools: Classrooms, sports teams and clubs are great ways to engage students in friendly coin collection competitions.

Summer Camps: Incorporate change collection into athletic events, arts & crafts activities or as part of a camp kick off/welcome event.

Businesses + Community Groups: Play up your industry/focus and remind customers that spare change is everywhere. Offer to match their contribution or provide a special gift/discount for donating their coins. Co-branded kits can be given as gifts to employees, members and customers as a feel-good way to say thanks.

Donate

- Contribute to a matching challenge
- Sponsor a matching challenge
- Choose your own amount to donate
- Sponsor a Change Kit
- Sponsor our kiosk at the Portland, ME Jetport

MEET OUR AMAZING STAFF!



ERIN MCCAFFERY - KIPPEWA ROVER

We are excited to announce a brand new Bunk Life position this summer. Alongside our Head Counselor and Division Heads will be a new position called the Kippewa Rover. Giving campers the attention they need is essential for us and this position allows for more time to assist with one-on-one help, group support, and any other areas of need within the bunk life spectrum. This role will also be deeply engrossed in everyday camp life; helping with things like Cookie Call, participating in different activities with the campers throughout the day, and just building strong bonds with them. We believe this position will only strengthen our already great bunk life team and add extra support for camper needs.

We are also excited to announce that Erin McCaffery will be entering this new role for this upcoming summer. She is returning for her third year and has previously been an archery instructor and also headed up our Nature Program. Between the summers, she spends much of her time studying things from biology to philosophy, watching cartoons, enjoying the blessing that is coffee, doing (and not-doing) yoga, and exploring the outdoors. Upon returning to Michigan this September she is excited to be leading a local Girl Scout troop, though a big piece of her heart always stays in Monmouth with Kippewa.

We can't wait to get this started and see you all at camp!



ALAN CLARE - WATER SKI DIRECTOR

Aidan, Brett, and Courtney's "Poppa," Alan, will be joining us for his 11th season heading up the water ski program at Kippewa, which he affectionately calls his favorite place on Earth. Alan hails from New Zealand where he has been coaching and competing in water skiing at national and international levels for many years. He won a number of age group national barefoot water ski titles himself but realized later that his real talent was in coaching. He coached Steve (Kippewa Director) to two New Zealand national titles before being asked to coach the New Zealand barefoot water ski team, a position he held for 15 years. Upon retiring from that position he returned to coaching children, guiding three young skiers to world championship level. Don't worry, he also knows the basics, including water skiing with one or two skis and even using a wakeboard! Alan believes "if it's not fun, it's not worth doing." His infectious "Kiwi" humor means everyone has fun while learning!

.....



MIKE DAVIS - TENNIS DIRECTOR

Mike is Kippewa's very own King of the Courts where he reigns over our 6 all-weather hard courts. Mike's enthusiasm, love for sports, and friendship with the campers and staff are the reason why Mike is making his 19th trip to Maine from Kingston, Jamaica. He began his camping career just down the street at Camp Cobbossee, but when Kippy was looking for a Tennis Director, he knew that was where he needed to be! Although now retired from full-time teaching, Mike was a faculty member at The Queens Preparatory School in Kingston, Jamaica, teaching physical education as well as tennis to children ages 6-12 in the winter (well, if you can call it winter down in sunny Jamaica). He is also a certified tennis pro and still offers private lessons to adults and children throughout the year. Mike's giant smile and infectious laugh make him a huge part of life at Kippewa. There is no doubt that after taking a tennis lesson with Mike, you will be hooked!

.....

Continued on next page....

AMAZING STAFF *Continued from previous page.*



GEMMA SHORT - SPECIAL EVENTS COORDINATOR

Gemma is very excited to be heading back to the Kippy bubble for her 7th summer. Back in 2012, she joined the Kippewa team

working in the Ropes program. She was then a nanny for two summers and was also our Trips Coordinator for a summer. This year will be her third year as a Special Events Coordinator and she is excited to dive back in! Gemma graduated with a degree in Primary Education and is now a full-time teacher and loves being around young people all year long and living with her two bunnies, Albus and Luna. She is literally counting the days until she is back in Maine and dancing to "Hey Juliet" in the Lodge!



BRITTANY BRUENING - OPERATIONS DIRECTOR

Brittany is back for her 7th summer and 2nd as year-round Operations Director! From Bunk Counselor, Dance

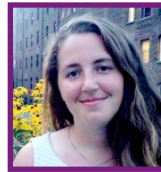
& Ceramics Instructor, to Visual Arts Director, camp has offered many ways for her to share her expertise. This year Britt will be focusing on a new aspect of her role as our Special Diets Liaison; your go-to for questions about food allergies or dietary needs. When she isn't recruiting staff in the winter office, she works for a restaurant that proudly accommodates dietary allergies and can't wait to put her knowledge and training to use at camp this summer! Don't worry - she'll still be sure to join in the dancing at mealtimes. Brittany received her BFA focusing in Ceramics and Printmaking from the University of Wisconsin Madison. After last years move from Milwaukee, Wisconsin to Charlottesville, she is starting to feel settled in her new home.



KAYLEE SPENCER - BARN MANAGER

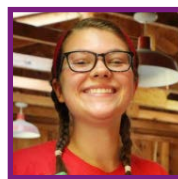
Coming to Kippewa from Oregon, Kaylee will be returning for her 5th at camp and her 3rd summer as Barn Manager. She has seventeen years of

riding experience, both competing and giving lessons. She can't wait to get back to the happiest place on earth and see all of the smiling faces, both new and old.



NICOLE MILLER - LANDSPORTS DIRECTOR

Nicole is excited to be joining Camp Kippewa for year four and this will be her 2nd as our Landsports Director. During the year, Nicole teaches K-12 music, including band and choir, in Iowa. She has played basketball, softball, and cross country, and has also coached track and field. Nicole is absolutely excited to make landsports fun and challenging for all the girls who come to camp. You will find her on Fenway North knocking softballs in the outfield and hearing her around camp saying "Fire Up Chips."



KYRA CUSHING - FINE AND STUDIO ARTS DIRECTOR

Kyra is returning to Kippewa for her 4th summer and is thrilled to step into the role of Fine and Studio Arts Director.

Previously at camp, Kyra worked as the Assistant Arts Director, Ceramics Instructor, and counselor for the Oldest Campers (OCs). She has just graduated from the New York State College of Ceramics at Alfred University with a Bachelor's Degree in Fine Art with a concentration in Ceramic Art and Sculpture and Dimensional Studies. She minored in painting and has a myriad of experience in other art forms as well. She was part of the Clay Collective at Alfred University, a specialized organization which encourages conversation and awareness to the broader ceramic culture and also holds fundraising programs and talks by guest artists from all over the world. Alongside visual arts, Kyra holds a musical background and can't wait to bring her many talents and passions to the new role this summer and get campers excited about all things art! When she's not at camp, Kyra is a yoga enthusiast and a proud "mom" to her rescue dog, a three-legged hound named Lola.



MEISHA BOOTH - ROPES DIRECTOR

Meisha comes to us from New Zealand. This will be her 4th summer in her favorite home away from home. She has 10 years of climbing experience and

8 years of coaching. She has traveled all over Europe on various climbing adventures and can't wait to get back to camp to see all the old and new faces and bring new, fun, and exciting challenges to camp!

Continued on next page....

AMAZING STAFF *Continued from previous page.*



**MARY PAIGE KOWALSKI -
EQUESTRIAN DIRECTOR**

Growing up in Cameron, South Carolina, Mary Paige spent every summer going to camp, starting in 2nd grade up through her senior year

of high school. Once in college, she couldn't just leave summer camps as a thing of her past so she became a camp counselor. This summer will be her 25th summer at camp and her 15th summer running an Equestrian Program (10 years at Kippewa!). Mary Paige loves Kippewa because it reminds her of what camp was like when she was a camper. She had her first pony ride at a zoo in Canada when she was five and was then hooked! She rode at Clemson University on their Equestrian team, where she also served as team President. While at Clemson she studied Equine Business as well as some extra course work in Agriculture Education. She is a Level III English and Western Certified Horsemanship Association Instructor as well as a Facility Certifier and is the Maine State Representative. She loves keeping up with the horse world by attending the Equine Affaire in West Springfield, Mass and the CHA International Conference every year! She is also super excited to be working the World Equestrian Games in Tryon, NC in September as this is only the second time it has ever been held in North America! Mary Paige conveniently lives just 10 miles from camp and can't wait to be back with her daughter, Elizabeth, her son, AJ and a full team of amazing horses!



**GEMMA COLLINS - TRIPS
COORDINATOR AND FENCING
INSTRUCTOR**

Gemma can't wait for her first year at Kippewa in the new and exciting role of Fencing Instructor and Trips

Coordinator. She currently lives in the north of England with her family but is delighted to meet campers and other staff when camp begins. Gemma has worked as an activity instructor for the last two years across England, teaching children and adults outdoor pursuits activities. She enjoys working with children and helping them develop personally and socially. She is eager to explore Maine and travel throughout America after camp, meeting new people and discovering America's culinary delights!



**NATALIE SHOFNER - TRIPS
DIRECTOR**

This will be Natalie's second year at Kippewa, and her first as the Trips Director. Coming from Lexington, Kentucky,

Natalie has been a Girl Scout for thirteen years and has years of experience in hiking, camping, and survival skills which she cannot wait to share with campers. She graduated from the University of Kentucky with highest honors in International Studies, focusing her education on East Asia and human rights and social movements. When she isn't working, Natalie enjoys developing her writing, watching movies, or spending time at the Red River Gorge National Park with her friends. Natalie is certified as a Maine Trips Leader and certified in Wilderness First Aid, and has participated in most trips that Kippewa has to offer, including leading the backpacking trip up Mount Katahdin, which is one of her favorite expeditions. Natalie has spent most summers throughout her life at day and resident camps and can't wait to be back at Kippewa for another incredible year full fun and adventure!



**RACHEL NEWSTEAD -
GYMNASTICS DIRECTOR**

Rachel grew up in Sydney, Australia and has been involved in the sport for 25 years as gymnast and now a coach for the last 9 years.

She is coming one from one of the biggest gymnastics clubs in Australia where she has been working as the Women's Gymnastics Head Coach. Rachel studied medical physics at university and is now taking a break from her masters of teaching degree to work and travel in the USA. She'll miss her pet kangaroo, Skippy, but is excited to live out her summer camp dream as the new Gymnastics Director at Camp Kippewa! Bring on the campfires and marshmallows!

Continued on next page....

AMAZING STAFF *Continued from previous page.*



MATT MANDEL - SCHEDULING DIRECTOR

Matt can't wait to begin his 6th summer at Kippewa. A National

Board Certified Teacher, Matt has received the School District of Philadelphia's top awards for teaching excellence in addition to recognition and honors at both the state and national levels. This year he received the 2018 B'nai B'rith Educators Service to the Profession Award. Whether helping to plan and coordinate an exciting menu of Free Choice and Options Day experiences or capturing each camp day in words for our online parent blog, Matt brings a lot of spirit and energy and more than 30 years of professional classroom and overnight camping experience to our wonderful leadership team!



KIMBERLY PARIS - OFFICE MANAGER

The friendly voice on the other end of the Kippewa line this summer will belong to Kimberly Paris. Kimberly attended Kippewa as a "tween" and is thrilled to be back again for her 4th

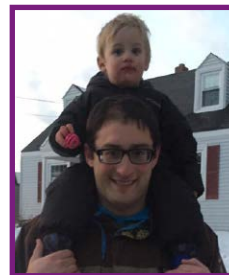
summer managing our office. As a mom, she brings energy, enthusiasm and an understanding of what it feels like to be a parent on the other end of the line. An MBA from NYU and over 25 years of event and project management experience assure us that she will have the office organized so we can concentrate on the campers and Kippewa fun! Originally from South Florida, Kimberly now lives in Westport, CT where she represents MaineCampExperience.com as a Campcierge™ and is very active in the school and on the PTA Board. Both Kimberly and her daughters, Samantha & Sabrina, can't wait to be back at their Kippewa home away from home!



JACKIE MANDEL - PARENT COMMUNICATION DIRECTOR

Jackie brings considerable skill and experience to her role in Kippy's office and operations department.

Following a 17-year career in higher education administration, Jackie earned a second Master's degree and became a full-time teacher in Philadelphia in 2008. Jackie was the Association for Continuing Higher Education's Educator of the Year in 2005 and is a member of the Phi Beta Kappa Honor Society. She is also a Senior Career Teacher in Philadelphia. She has a love (and a talent) for musical theatre and has extensive summer camp leadership experience, in addition to a few summers as a camper herself! The entire Mandel family is excited to be back at camp this summer: Jackie in the office, Matt organizing our programming, Jes as our Junior Division Head, and Lily as an OC!



ADAM WEINER - SCHEDULER

This will be Adam's first year at Kippewa, but is very familiar with all things Maine, as he resides in Bangor (about an hour from camp). He is coming

to us as the new scheduler and will be working alongside Matt to make sure the campers have an awesome summer of activities! He currently works as a Physical Education teacher at the Palermo Consolidated school in Palermo, ME. He is also in the process of getting his Master's in Education Leadership at the University of Maine in Orono. He is super excited to get back into camping after taking a four-summer break and cannot wait for this new experience. When he's not at camp, Adam loves being outside and playing with his son. He cannot wait to be at camp!

Continued on next page....

AMAZING STAFF *Continued from previous page.*



**JOCELYN DOWLING
- WATERFRONT
DIRECTOR**

Jocelyn is happy to be joining us again for her 7th summer at the Kippewa

Waterfront. Jocelyn has grown up around the water whether it be canoeing, kayaking or swimming. She has been a lifeguard since she was 15 years old and a competitive swimmer since she was 7. Jocelyn's swimming career brought her to University of Guelph where she competed nationally for 5 years while earning her Degree in Human Kinetics and Sports Injury Management. She went on to become the Head Athletic Therapist at Mount Allison University and spends her off season rehabilitating athletes and their injuries. Her own family of little campers will also be spending their summer either with us at Kippewa or at our brother camp Cobbossee. They are a very active bunch who enjoy everything about camp. Jocelyn and her kids really grew up in the wonderful world of camping. She has filled many roles in the camping industry from counselor and swim instructor, to Group Leader, Head Counselor, Pool Director and finally landed her dream position as Waterfront Director.



**CARA SCHWERTS - HEAD
COUNSELOR**

Cara can't wait to start her 5th summer at Kippewa! This summer she is excited to step into the role of Head Counselor. In the past Cara

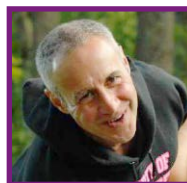
has served as the Assistant Head Counselor, Lower Senior Division Head, and trips leader and archery instructor. Her favorite things to do around camp are swimming in the lake and evening activities. She loves that at Kippewa everyone is able to let loose and be goofy! During the school year Cara teaches high school math outside of Richmond, Virginia.



DEBBIE VILARDI - HEAD NURSE

Debbie is not only our RN in residence for her 18th season, but she is a dear friend to all Kippewa families. Debbie works hard taking care of all of us. If we need a hug or are feeling under the weather, a quick trip

to the Pillbox will fix all. Debbie graduated from nursing school at Cazenovia College in New York State. She has homeschooled all of her children and they have either gone on to serve in the military, attain a degree in college, or jump start a career. She recently relocated from Pennsylvania to South Carolina and cannot wait to make the trek back up north to Maine. Her passion and love for people shines everywhere she goes!



**RICHARD STEGMAN - PERFORMING ARTS
DIRECTOR**

Richard Stegman has been deeply involved with Kippewa since the summer of 2008! He is returning as the Performing Arts Director for a seventh time and considers the Playhouse his true home. He lives in New York City where he works as an Artist Mentor for YAI, a photographer, catering consultant, and meditation instructor.



STEPHANIE CALLEN - LIT DIRECTOR

Stephanie's journey at Kippewa started in 1996, her first year as a camper! It was love at first campfire, and she returned to Kippewa through her OC summer. Steph returned to

Maine as a staff member from 2002-2005 to spend her days on the lake teaching sailing. Little known fact: she actually spent one of these summers working on the waterfront at Cobbossee! After a few years away from Kippewa, Steph happily made her way back in 2010 as a waterfront counselor and then took over as our Trips and Adventure Director in 2011 and 2012. Once she began her non-camp career, she wasn't able to commit to camp for the entire season, but Kippewa still remained her second home and Steph returned to Kippewa each summer to lead Mount Katahdin trips with our Mighty Hikers! She is thrilled to now be taking on the LIT Director role and helping to guide the LITs in this inaugural year. When not dreaming of Kippewa, Steph is a Financial Consultant and Social Media Marketing Manager, along with owning and operating a property management company. She lives in Louisville, Kentucky with her husband John, and their two dogs, Nathan and Mercy.

SPRING FLING!!!

On May 6th, new and returning Kippewa girls met up in New York for our annual "Kippewa Spring Fling." It was a great opportunity for returning campers to reunite, new campers to meet other girls coming to camp, and for everyone to get to know some of our amazing staff. Everyone enjoyed playing human Bingo as an opening ice breaker, and then we broke into small groups to participate in a sampling of Kippewa's World Records. We also met with parents to talk about the upcoming summer. New friendships were formed, old friends were reunited, and Kippewa girls enjoyed a great introduction to camp. It made all of us even more excited for the summer!



CAMPER GET-TOGETHERS



Nina P. and **Brianna B.** get festive at the National Christmas Tree in D.C. over the holiday break!



Remy W. and **Ryder W.** meet up for brunch in New York over Spring Break!



Larissa W. and **Lila P.** hang out at the National monument in D.C. over Spring Break!



Avery J., **Jackie J.**, and **Ana S.**, meet up to go shopping!



Sam P. and **Shaina W.** run into each other at an ice skating clinic in Westchester!



Jill and **Rachel L.** were pumped to bump into their favorite tennis instructor, **Mike!**



Claire L. met up with counselor **Lauren C.** while she was across the pond sight-seeing in London!

TECHNOLOGY



One of the things we love about camp is the break we get from the constant noise of the internet and cell phones. Camp is a great place to free ourselves for a short time of many outside distractions and just be in the moment and enjoy things like the lake, campfires, dancing, face-to-face interactions, and forming friendships. We have seen year after year how much campers really respond to this freedom and love being able to dive into hands-on projects and activities. This is one of the reasons we value our technology policies and have them in place. Just as a reminder, no cell phones, iPod touches (or any smart device which can also access the internet), or Apple watches are permitted. This rule is in effect on all camp transportation as well, so please just leave the phones at home! Any phone brought to camp will be held in the office with the camper's name on it and returned to them when they are either picked up on the last day or dropped off via camp transportation. Again, we value organic relationships, and being tech-free for a few weeks really can feel great!

Facial Recognition Software in Photos Round 2!

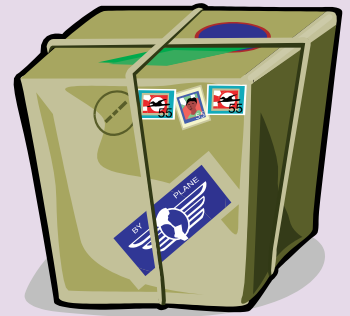


As many of you know, we implemented an upgrade in our photo system software with CampMinder last year to include facial recognition. The great minds at CampMinder (the company behind your myKippewa accounts) have been working all year to fix some of the bugs we encountered and also took your great feedback to make the software work even better. We are still working with CampMinder in beta testing this new technology and will continue to provide feedback for de-bugging any issues we run into, but are excited to head into year 2 with even better accuracy! For those learning about this new software for the first time, here's a little information about it: When you sign in to view photos this summer there will be a personalized folder with photos of your daughter(s) already marked for you to view. This folder will also contain some additional photos that we have selected to give you an overall idea of what went on at camp that day (for instance, if it is a big special event day we will make sure you see some of those special event photos even if your daughter isn't in them). You will also still have access to the full database of pictures that we post so you can spend additional time browsing through photos of camp in general.

PACKAGE POLICY REMINDER

We would like to ask for your support in following our package policy. Please inform friends and family members as well, we find they are often the most frequent “offenders”!

We very intentionally restrict the size and contents of packages sent to campers. Hearing from parents through letters and emails is very meaningful for the girls and we don’t see the need for excessive “stuff” or food. We don’t have the space in the cabins and we want to avoid any feeling of competition or needing to keep up with everyone else. We really appreciate your cooperation!



We allow “packages” to be sent in Priority Mail or FedEx sized envelopes (9x12) only. It is okay to include camp friendly items such as stationery, age appropriate magazines and stickers but please do not send any food, bunk gifts (gifts for everyone in the bunk) or other similar items. **We do not allow boxed packages. This includes items sent directly from an outside vendor such as Amazon.** If you need to send a larger essential item (such as forgotten shoes or bedding), please email office@kippewa.com with the subject line “Package Approval Request.” All unapproved boxes will not be opened and will be returned to sender or held until the end of camp. All large envelopes and pre-approved boxes will be opened by our staff, and any food or restricted items will be confiscated. The only exception to the package size-restriction is for birthdays during camp. Please call us if you plan on sending a birthday package. Food items and bunk gifts (gifts for everyone in the bunk) are not permitted in birthday packages.

MEDICATION/VITAMIN POLICY REMINDER

We have received numerous questions about using CVS for medications and vitamins. CVS packages medications specially for our camp health center so our staff aren’t dealing with opening bottles and dispensing the right amounts when distributing meds to our campers. They pre-package medications / vitamins sent to them in bubble packs by time of day. Their system helps our nurses spend their time more efficiently (focusing on your children instead of focusing on bottle caps!) and increases safety in the distribution and administration of all medications.



Campers with prescription medication or vitamins that will be taken during the summer must be dispensed through CVS Pharmacy’s medication distribution system. This applies to all pill-form medication and vitamins that campers take regularly. A letter is available in your myKippewa account regarding the procedures with CVS. CVS will ship your daughter’s medication and daily vitamins directly to camp before camp opens. Any medication not covered by CVS, such as liquid medication, drops, and inhalers must be sent to camp one week prior to arrival day. If your insurance won’t allow you to use CVS or you have any other issues please contact us directly.

As a reminder, all medication including ointments and creams (only exceptions are inhalers and epi-pens) must be kept in the health center. Please inform us if your daughter needs to keep an inhaler with her. Any self-administered medication, such as inhalers, require a parent and doctor’s signature on the Self Administer Emergency Medication Form. Please send two inhalers and/or epi-pens with your daughter (one for her to keep with her and one to be kept in the health center.)



1 Kippewa Drive
Monmouth, Maine 04259

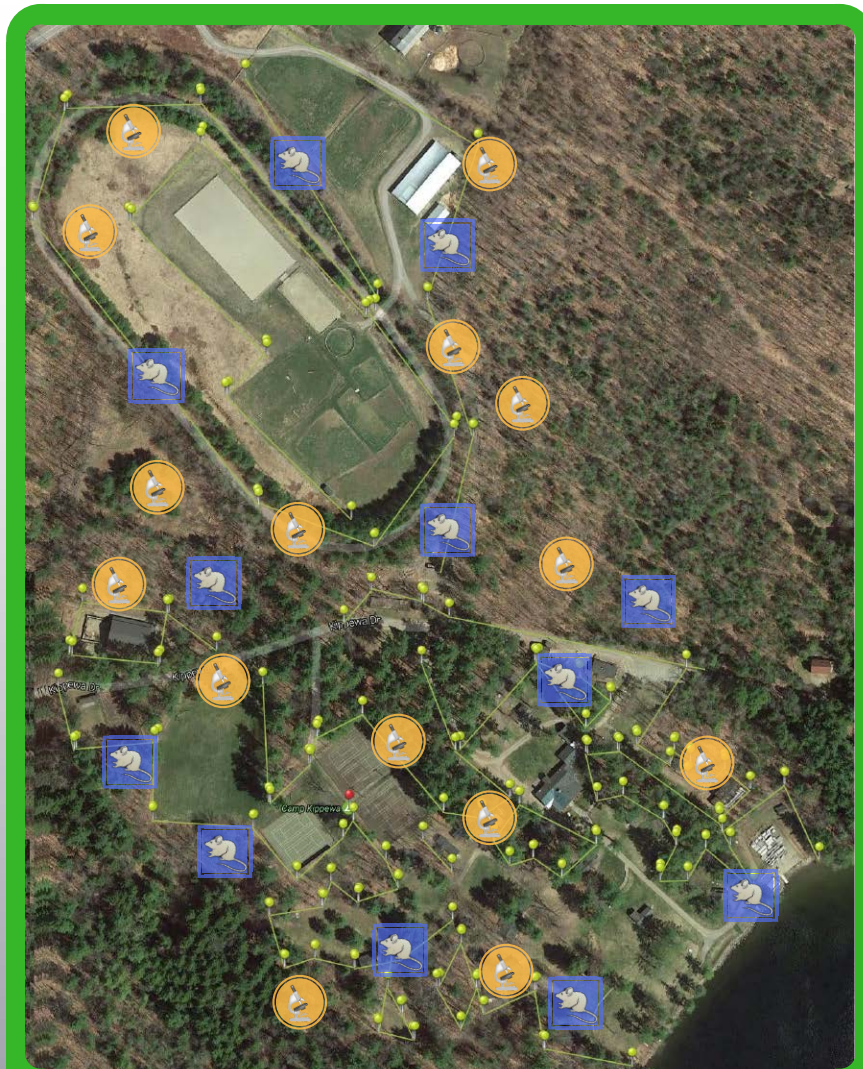


IMPORTANT DATES SUMMER 2018

1st SESSION	Thursday, June 21 - Sunday, July 15
1st VISITING/PICK UP DAY	Sunday, July 15
2nd SESSION	Wednesday, July 18 - Saturday, August 11
2nd VISITING/PICK UP DAY	Saturday, August 11
FAMILY CAMP	Sunday, August 12 - Friday, August 17

**Get Ready for Another
Awesome Kippy Summer!**

www.kippewa.com • 1-800-547-7392



Camp Kippewa has implemented our most advanced program.

Ivy Oaks Analytics is a Public Health Control company that specializes in Tick, Mosquito and Poison Ivy control at large commercial recreation areas. We work with over 100 premier summer camps. All products we use are EPA Approved for summer camps and we prefer to use natural products. While our program achieves a very high level of control we cannot guarantee 100% of ticks, mosquitoes or poison ivy will be eliminated in large camps. Our program also includes staff education for counselors on poison ivy identification and tick habitat identification.

For more information please visit:
www.IvyOaksAnalytics.com

**CERTIFIED
CAMP**

**MOSQUITO &
TICK CONTROL
POISON IVY
CONTROL**



IVY OAKS ANALYTICS

Cert. #A7554C



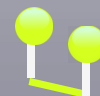
Tick Population Test Station

14 stations will be deployed to measure tick population levels. Each station releases odors that attract ticks. The data gathered from each station helps determine where ticks are most concentrated allowing us to implement a more effective and targeted control program as well as monitor population reduction.



Host-Oriented Tick Control

Rodents and Chipmunks generally transit Lyme disease to ticks which is later passed to humans. We have installed 12 devices which treat rodents fur with a liquid to prevent ticks from hosting. The process is similar to flea and tick medication applied to pets and does not harm the rodent. This method shifts rodents from infecting ticks with disease to instead tick killers. Yes, the chipmunks and mice control ticks at Camp Kippewa.



Treatment Perimeter Zone

The neon yellow lines represent our perimeter treatment zone. Along this section we inspect monthly for poison ivy, mosquito breeding activity, and proactively treat for tick population control. This establishes a barrier surrounding camp where ticks, mosquitoes and poison ivy are suppressed.

