

KIPPY GAZETTE

A LETTER FROM THE DIRECTORS



Greetings, Kippewa Families!

It's that time of the year. Our staff have started arriving in Maine and the smell of summer is in the air. We don't know about you, but we can hardly wait! We spend the entire year working hard to get ready for the summer and for everyone's arrival and as the start of camp approaches, the excitement builds. It is always amazing how much work gets done in the three weeks

before camp begins. With the help of so many wonderful returning counselors who help to set the tone, our staff come to Maine full of energy, enthusiasm, and ready to get camp underway!

You have heard us send out the reminders about your forms - please make sure yours are complete and up to date! We need that information in-hand to make sure we are ready for the campers' arrival. Many of the forms are required by the state and others are essential for helping us understand your daughter's personality, needs, and how she is actually coming to/from camp.

Let us know if you have questions. We hope you are feeling prepared for the summer! This newsletter provides additional information to help make sure you are ready. We will also be sending out one more flyer with details for departure day as the start of each session begins. We can't wait to see everyone in Maine very soon!

WARMLY,

Elmer & Sue



WHAT'S INSIDE

Costume and Library Call	2
Lice Policy Treatment Reminder	2
Program Update	2
What to Expect on the First Day of Camp	3
World of Change	3
Meet Our Amazing Staff	4-8
Tick Prevention Update	8
Spring Fling	9
Camper Get-Togethers	10
Phone Scheduling.....	10
Technology at Camp.....	10
Updated Package Policy.....	11
Medication/Vitamin Policy Reminder	11
Important Dates.....	Back
Are You Receiving Our Emails?.....	Back

myKippewa Reminder

If you have not yet completed your daughter's forms, please login to your myKippewa account and submit them to us! When filling out your daughter's Travel and Baggage form, please be as detailed as possible. We want to make sure that we know exactly how she will be arriving at camp! If you have any specific details that you need to discuss, please feel free to contact us. Any forms should be mailed to our summer address in Maine.

Camper Forms were due on May 1st.



WE MOVED UP TO CAMP!

We are happily settling into life in Maine. Please send all correspondence to our Summer Address:



**Camp Kippewa
1 Kippewa Drive
Monmouth, Maine 04259**

Costume & Library Call



Since we began our Kippy library a few years ago, we

have watched the selection grow through generous donations from our Kippewa Families and staff. The Library has become a popular part of our camp culture! We are excited to add even more to our already extensive collection in order to provide even more selections for Kippy girls to read each summer. If you have old books hanging around, and would like to see them find a happy new home...think of us! We will happily take them off your hands.



We are always looking for additions to our costume department, we need your help! Before turning that old prom dress into rags or tossing out Grandpa's plaid jacket, please send it to us at camp. We welcome any clothing and/or accessories that you would like to share with our playhouse. Kippy's future thespians appreciate your help!



LICE POLICY & TREATMENT REMINDER

When campers arrive at camp their first stop is to check in with the nurses to make sure medical records and medications are intact, and to get their heads checked. We have once again partnered with Lice Treatment Center, a professional company, to take care of this inspection. We will have Kippewa staff members on-hand as well to visualize any positive findings. **We have a "no nit" policy at Kippewa.** This means if we see even one nit in a child's hair they are required to be treated - it is too difficult for us to be in a position of deciding whether the nit is "live" or not and we don't want to risk bringing lice into camp. While lice isn't harmful, it is a nuisance and spreads quickly especially in a camp environment. The staff from Lice Treatment Center will treat anyone who arrives with nits and/or live lice using their oil-based treatments and through extensive combing. There will also be follow up comb-outs and oil treatments for 5-7 days. **We will contact you if your daughter is found to have lice or nits upon arrival, and Kippewa will bill parents \$395 for any lice treatment required.** For more information on Lice Treatment Center and their treatment methods go to their website www.licetreatmentcenter.net.

Please make sure you thoroughly check your daughter before she heads off to camp. While we will do our best to make her comfortable and supported, it is never a great welcome to camp spending time being treated for lice while everyone else settles in. If you are interested in having your child professionally checked before camp and you live in the CT or NYC areas, Lice Treatment Center is available. They charge an hourly rate of 125 per hour with a 1-hour minimum. Please contact them directly at 888-542-3292 (888-LICE-AWAY) if you are interested and make sure to mention your daughter attends Kippewa.

PROGRAM UPDATE

We are excited to expand upon our writing programs at Kippewa this summer. In previous years we have provided creative writing options when we were able. For 2019 we will be offering **JOURNALISM / CREATIVE WRITING** as a regular activity period. Girls will work together to create newsletters full of interviews, news articles, creative writing pieces, poetry, and more. We can't wait to see where this program will take us!



Get 15% off all purchases from the Ranger Ready website. Go to <https://rangerready.com> and use code KIPPEWA19 for savings on insect repellent and MORE!



Also, to access a discount coupon at Modell's Sporting Goods, go to: http://www.maineexperience.com/pdf/MCE_2019_Modells_Promotional_Offer.pdf

What to Expect on the First Day of Camp

We understand that the first day of camp can be a little scary for some of you and we want the transition to be as great as possible. Here is a little rundown on what you should expect on that first day. The staff at Kippewa will be so excited to meet you! By the time you arrive, they will have already been at camp for a whole week (and some even longer) and they can't wait to meet you! Whether you arrive on a camp bus or by car, when you first drive into camp you will meet your bunk counselors and some of your bunkmates. You will then head over to The Pillbox (our Health Center) where our wonderful nurses will do a quick general health check and you will get your head checked by the eagle-eyed technicians from Lice Treatment Center. After that, together with your bunk counselors and bunkmates, you will head to your bunk to begin unpacking and settle in.

Your bunk will be decorated and we assign beds ahead of time so you don't need to worry about claiming one or be worried about how you will choose. Once you are settled and unpacked, your counselors will help you make your bed and put your clothes away. The afternoon will be filled with playing get-to-know you games and tours of camp. For dinner, the whole camp



will come together in The Lodge to eat and you will sit with your bunkmates and counselors. Once we all finish eating our traditional first meal of Pizza and Kippy Cookies, you'll get a little glimpse of true Kippy spirit as we all dance and sing in The Lodge (a true Kippewa tradition!) to welcome the Summer of 2019!

After dinner, everyone will be introduced to their Camp Sisters. Camp Sisters are in many ways an instant friend, and if it is your first summer at Kippy, you are placed with someone who has been to camp before. They can help teach you about camp traditions and help make sure that you are loving camp just as much as they are. Together with your camp sisters, you will participate in our first evening activity: World Records. Many different activities will be set up around camp, and together you will try and set the "World Record" in different silly games! By the end of Evening Activity, it will be time to head back to your bunk for bedtime. You will surely be exhausted and ready for a good night of sleep! If you find you are a little bit nervous or sad while you are adjusting to camp try not to worry, it's normal and common, and your counselors will be there ready to help. Hopefully you now have an idea of what to expect when you arrive. Most importantly, don't be afraid to ask questions; we are here to help!

WE CAN'T WAIT TO SEE YOU ALL IN MAINE!

We are excited to partner once again this summer with the rest of the MCE (Maine Camp Experience) camps to support the World of Change organization. You can help by bringing your loose change from home to donate to this great cause. Kippewa campers and staff will get to decide where the funds we bring in will be donated. You can find more information about this program online at: <https://www.worldofchange.world>. 100% of the funds collected go directly to programs with partners who are doing life-changing work in the areas of housing, food security, education, financial literacy, health and wellness, and children's play. Private donors and sponsors cover our operating costs so 100% of your money can make change.

Start collecting your change now!



There's an estimated \$10 billion in loose change sitting idle in American households - that's \$90 per household! World of Change is on a mission to put that change to good use.

- 100% of collected change goes to established programs and partners supporting housing, food security, financial literacy, childhood literacy, health and wellness, and children's play.
- All operating costs are covered by private donors, foundations and sponsors, ensuring that 100% of your change can make change.
- The benefits extend far beyond the recipients of change; World of Change engages youth in understanding citizenship, the powers they have as individual change agents, and their capacities for local and global impact.



Bring your change to camp, we will have collection jars ready upon arrival!



Be a change maker.

Inspire kids and adults alike to make change with our Change Kits.

Schools: Classrooms, sports teams and clubs are great ways to engage students in friendly coin collection competitions.

Summer Camps: Incorporate change collection into athletic events, arts & crafts activities or as part of a camp kick off/welcome event.

Businesses + Community Groups: Play up your industry/focus and remind customers that spare change is everywhere. Offer to match their contribution or provide a special gift/discount for donating their coins. Co-branded kits can be given as gifts to employees, members and customers as a feel-good way to say thanks.

Donate

- Contribute to a matching challenge
- Sponsor a matching challenge
- Choose your own amount to donate
- Sponsor a Change Kit
- Sponsor our kiosk at the Portland, ME Jetport

MEET OUR AMAZING STAFF!



ALAN CLARE - WATER SKI DIRECTOR

Aidan, Brett, and Courtney's "Poppa," Alan, will be joining us for his 12th season heading up the water ski program at Kippewa, which he affectionately calls his favorite place

on Earth. Alan hails from New Zealand where he has been coaching and competing in water skiing at national and international levels for many years. He won a number of age group national barefoot water ski titles himself but realized later that his real talent was in coaching. He coached Steve (Kippewa Director) to two New Zealand national titles before being asked to coach the New Zealand barefoot water ski team, a position he held for 15 years. Upon retiring from that position he returned to coaching children, guiding three young skiers to world championship level. Don't worry, he also knows the basics, including water skiing with one or two skis and even using a wakeboard! Alan believes "if it's not fun, it's not worth doing." His infectious "Kiwi" humor means everyone has fun while learning!

.....



MIKE DAVIS - TENNIS DIRECTOR

Mike is Kippewa's very own King of the Courts where he reigns over our 6 all-weather hard courts. Mike's enthusiasm, love for sports, and friendship with the campers and staff are the reason why Mike is making his 20th trip to Maine from Kingston,

Jamaica. He began his camping career just down the street at Camp Cobbossee, but when Kippy was looking for a Tennis Director, he knew that was where he needed to be! Although now retired from full-time teaching, Mike was a faculty member at The Queens Preparatory School in Kingston, Jamaica, teaching physical education as well as tennis to children ages 6-12 in the winter (well, if you can call it winter down in sunny Jamaica). He is also a certified tennis pro and still offers private lessons to adults and children throughout the year. Mike's giant smile and infectious laugh make him a huge part of life at Kippewa. There is no doubt that after taking a tennis lesson with Mike, you will be hooked!

.....

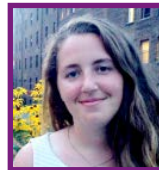


GEMMA SHORT - SPECIAL EVENTS COORDINATOR

Gemma is very excited to be heading back to the Kippy bubble for her 8th summer. Back in 2012, she joined the Kippewa team

working in the Ropes program. She was then a nanny for two summers and was also our Trips Coordinator for a summer. This year will be her fourth year as a Special Events Coordinator and she is excited to dive back in! Gemma graduated with a degree in Primary Education and is now a full-time teacher and loves being around young people all year long and living with her four bunnies, Albus, Luna, Molly, and Fleur. She is literally counting the days until she is back in Maine and dancing to "Hey Juliet" in the Lodge!

.....



NICOLE MILLER - LANDSPORTS DIRECTOR

Nicole is excited to be joining Camp Kippewa for year four and this will be her 3rd year as our Landsports

Director. During the year, Nicole teaches K-12 music, including band and choir, in Iowa. She has played basketball, softball, and cross country, and has also coached track and field and softball. Nicole is absolutely excited to make landsports fun and challenging for all the girls who come to camp. You will find her on Fenway North knocking softballs in the outfield and hearing her around camp saying "Fire Up Chips."

.....



MEISHA BOOTH - ROPES DIRECTOR

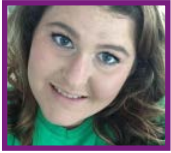
Meisha comes to us from New Zealand. This will be her 5th summer in her favorite home away from home. She has 11 years of climbing

experience and 9 years of coaching. She has traveled all over Europe on various climbing adventures and can't wait to get back to camp to see all the old and new faces and bring new, fun, and exciting challenges to camp!

.....

Continued on next page....

AMAZING STAFF *Continued from previous page.*



**KAYLEE SPENCER - KIPPEWA
EQUESTRIAN PROGRAM HEAD
COUNSELOR**

Coming to Kippewa from Oregon, Kaylee will be returning for her 6th summer at Kippewa. She will be the Head Counselor for Kippewa Equestrian Academy and is super excited to be part of this program. She has 4 years of experience as Barn Manager for Kippewa as well as eighteen years of riding experience, both competing and giving lessons. She has also served as a bunk counselor, mentor, staff supervisor and has several years of experience working with young people in various other roles. Kaylee can't wait to be back at the happiest place on earth!

.....



**KYRA CUSHING - FINE AND STUDIO
ARTS DIRECTOR**

Kyra is returning to Kippewa for her 5th summer and is thrilled to return as Visual Arts Director. Previously at camp, Kyra worked as the Assistant Arts Director, Ceramics Instructor, and counselor for the Oldest Campers (OCs). She graduated from the New York State College of Ceramics at Alfred University with a Bachelor's Degree in Fine Art with a concentration in Ceramic Art and Sculpture and Dimensional Studies. She minored in painting and has a myriad of experience in other art forms as well. During the past year, she worked as Studio Manager at a pottery studio. In addition to the visual arts, Kyra has a strong musical background and can't wait to bring her many talents and passions to camp this summer, getting campers excited about all things art and music! When she's not at camp, Kyra is a yoga enthusiast, a novice roller skater and a country western music fanatic.

.....



**MARY PAIGE KOWALSKI -
EQUESTRIAN DIRECTOR**

Growing up in Cameron, South Carolina, Mary Paige spent every summer going to camp, starting in 2nd grade up through her senior year of high school. Once in college, she couldn't just leave summer camps as a thing of her past so she became a camp counselor. This summer will be her

26th summer at camp and her 16th summer running an Equestrian Program (11 years as Equestrian Director at Kippewa!). Mary Paige loves Kippewa because it combines her favorite parts of camp from her childhood with premiere level equestrian experiences and she is so excited about Kippewa Equestrian Academy. She had her first pony ride at a zoo in Canada when she was five and was then hooked! She rode at Clemson University on their Equestrian team, where she also served as team President. While at Clemson, she studied Equine Business as well as some extra course work in Agriculture Education. She is a Level III English and Western Certified Horsemanship Association (CHA) Instructor as well as a Facility Certifier and is the Region 6 Director. She prides herself on staying current in the industry by attending the Equine Affaire in West Springfield, Mass and the CHA International Conference every year! She worked at the World Equestrian Games in Tryon, NC last year and spoke to camp professionals on safety in the industry at the 2019 Tri-State Camp Conference. Mary Paige conveniently lives just 10 miles from camp and can't wait to get all of our awesome horses to camp and is ready to meet our campers!

.....



NATALIE SHOFNER - TRIPS DIRECTOR

This will be Natalie's third year at Kippewa, and her second as the Trips Director. Coming from Lexington, Kentucky, Natalie has been a Girl Scout for thirteen years and has years of experience in hiking, camping, and survival skills which she cannot wait to share with campers. She graduated from the University of Kentucky with highest honors in International Studies, focusing her education on East Asia and human rights and social movements. When she isn't working, Natalie enjoys developing her writing, watching movies, or spending time at the Red River Gorge National Park with her friends. Natalie is certified as a Maine Trips Leader and certified in Wilderness First Aid, and has participated in most trips that Kippewa has to offer, including leading the backpacking trip up Mount Katahdin, which is one of her favorite expeditions. Natalie has spent most summers throughout her life at day and resident camps and can't wait to be back at Kippewa for another incredible year full of fun and adventure!

.....

Continued on next page....

AMAZING STAFF *Continued from previous page.*



KIMBERLY PARIS - OFFICE MANAGER

The friendly voice on the other end of the Kippewa line this summer will belong to Kimberly Paris. Kimberly attended Kippewa as a “tween” and is thrilled to be back again for her 5th summer managing our

office. As a mom, she brings energy, enthusiasm and an understanding of what it feels like to be a parent on the other end of the line. An MBA from NYU and over 25 years of event and project management experience assures us that she will have the office organized so we can concentrate on the campers and Kippewa fun! Originally from South Florida, Kimberly now lives in Westport, CT, where she represents MaineCampExperience.com as a Campcierge™ and is very active in the school and on the PTA Board. Both Kimberly and her daughters, Samantha & Sabrina, can’t wait to be back at their Kippewa home away from home!

.....



JACKIE MANDEL - PARENT COMMUNICATION DIRECTOR

Jackie brings considerable skill and experience to her role in Kippy’s office and operations department. Following a 17-year career in higher education administration, Jackie earned

a second Master’s degree and became a full-time teacher in Philadelphia in 2008. Jackie was the Association for Continuing Higher Education’s Educator of the Year in 2005 and is a member of the Phi Beta Kappa Honor Society. She is also a Senior Career Teacher in Philadelphia. She has a love (and a talent) for musical theatre and has extensive summer camp leadership experience, in addition to a few summers as a camper herself! Jackie is excited to be back at camp this summer!

.....

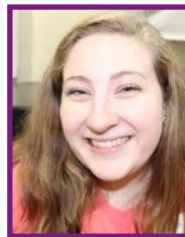


JOCELYN DOWLING - WATERFRONT DIRECTOR

Jocelyn is happy to be joining us again for her 8th summer at the Kippewa Waterfront.

Jocelyn has grown up around the water whether it be canoeing, kayaking or swimming. She has been a lifeguard since she was 15 years old and a competitive swimmer since she was 7. Jocelyn’s swimming career brought her to the University of Guelph, where she competed nationally for 5 years while earning her Degree in Human Kinetics and Sports Injury Management. She went on to become the Head Athletic Therapist at Mount Allison University, and spends her off season rehabilitating athletes and their injuries. Her own family of little campers will also be spending their summer either with us at Kippewa or at our brother camp, Cobbossee. They are a very active bunch who enjoy everything about camp. Jocelyn and her kids really grew up in the wonderful world of camping. She has filled many roles in the camping industry from counselor and swim instructor to Group Leader, Head Counselor, Pool Director, and finally landed her dream position as Waterfront Director.

.....



CARA SCHWEERS - HEAD COUNSELOR

Cara can’t wait to start her 6th summer at Kippewa! She is excited to continue her role as Head Counselor. In the past Cara has served as the Assistant

Head Counselor, Lower Senior Division Head, and trips leader and archery instructor. Her favorite things to do around camp are swimming in the lake and evening activities. She loves that at Kippewa everyone is able to let loose and be goofy! During the school year Cara teaches high school math outside of Richmond, Virginia.

.....

Continued on next page....

AMAZING STAFF *Continued from previous page.*



DEBBIE VILARDI - HEAD NURSE

Debbie is not only our RN in residence for her 19th season, but she is a dear friend to all Kippewa families. Debbie works hard taking care of all of us. If we need a

hug or are feeling under the weather, a quick trip to the Pillbox will fix all. Debbie graduated from nursing school at Cazenovia College in New York State. She has homeschooled all of her children and they have either gone on to serve in the military, attain a degree in college, or jump start a career. She now resides in South Carolina and cannot wait to make the trek back up north to Maine. Her passion and love for people shines everywhere she goes!

.....



RICHARD STEGMAN - PERFORMING ARTS DIRECTOR

Richard Stegman has been deeply involved with Kippewa since the summer of 2008! He is returning

as the Performing Arts Director for an eighth time and considers the Playhouse his true home. He lives in New York City where he works as an Artist Mentor for YAI, a photographer, catering consultant, and meditation instructor.

.....



MARISSA LOPEZ RAMIREZ - PROGRAM DIRECTOR

Marissa is returning to camp for her third year and she can't wait to be back! She spent the last two years as one of our camp photographers and will be stepping

into Program Director this summer. Marissa hails from Mexico and has a background in communications, public relations, and also worked in radio and tv production for six years. She loves to learn about other cultures and foreign languages. She also loves to travel, hang out with her dog, Blues (like the rhythm), and sing opera. One of Marissa's favorite camp activities is the campfires, and she is thrilled to be back for another great summer!

.....



STEPHANIE CALLEN - LIT DIRECTOR

Stephanie's journey at Kippewa started in 1996, her first year as a camper! It was

love at first campfire, and she returned to Kippewa through her OC summer. Steph returned to Maine as a staff member from 2002-2005 to spend her days on the lake teaching sailing. Little known fact: she actually spent one of these summers working on the waterfront at Cobbossee!

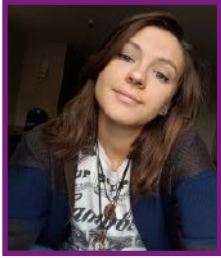
After a few years away from Kippewa, Steph happily made her way back in 2010 as a waterfront counselor and then took over as our Trips and Adventure Director in 2011 and 2012. Once she began her non-camp career, she wasn't able to commit to camp for the entire season, but Kippewa still remained her second home and Steph returned to Kippewa each summer to lead Mount Katahdin trips with our Mighty Hikers! She is thrilled to be in her second year as the LIT Director and also now works for Kippewa year-round.

When not dreaming of camp, Steph is a Financial Consultant and Social Media Marketing Manager, along with owning and operating a property management company. She lives in Louisville, Kentucky with her husband John, and their two dogs, Nathan and Mercy.



Continued on next page....

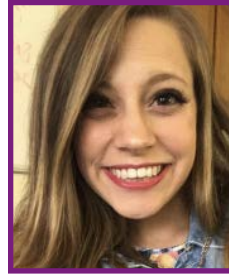
AMAZING STAFF *Continued from previous page.*



ERIN MCCAFFERY - CAMPER CARE COORDINATOR

Erin is returning to Kippewa for her fourth summer, and second summer as the Camper Care Coordinator. This role serves to offer one-on-one camper support, emotional guidance, self advocacy education, and a loving set of ears for any concerns a camper might face, as well as an additional parent liaison. Her passion in life is the uplifting and supporting of those around her and fostering the insatiable curiosity for life wherever it might grow. Outside of camp, she is pursuing a double major in Biology and Psychology, and a minor in Philosophy, with specific interests in genetics, ecology, developmental psychology, and holistic health theory. You might find her on camp building fairy houses for options days, hanging around the archery range, or marveling at creations in the art lofts.

.....



ALLY GORECKI - SCHEDULER

Ally will be stepping into the scheduler role for her first season with Kippewa, as she helps your children craft their perfect summer! She is excited to join the Kippy family and ready to embrace all that camp entails. Ally truly has a passion for supporting youth and helping them find their individual voice. She has been an active participant in girls' leadership groups including local Girl Scout troops, Girls on the Run, and Women and Youth Supporting Each Other (WYSE). During the year, Ally co-teaches 4th and 5th grade Special Education near Chicago, IL. She also helped begin a competitive dance team five years ago, with which she spends all of her free time and weekends. She can't wait to boogie on over to Maine to make your summer the best it can be!

.....

Ticks & Lyme Prevention and Awareness

One of our favorite things about the summer is getting to experience the beautiful outdoors of Maine! The lake, the trees, the loons...it's really hard to beat! We realize, however, that with this beautiful outdoor haven comes some concerns such as ticks. We have always sprayed and treated the camp grounds as a preventative measure, but since 2017 we have partnered with Ivy Oaks Analytics (www.ivyoaksanalytics.com) to provide their most advanced program for mosquito, tick, and poison ivy control on our camp grounds. Even with these precautions, it is an ongoing challenge to completely exclude ticks from our property due to both people and animals coming and going throughout the summer. We encourage our families to educate themselves and their campers about ticks, Lyme disease, and the steps to take to prevent contact this summer. Wearing bug spray that contains Deet and treating shoes and clothing with Permethrin are both important protective measures. We expect all girls to pack bug spray and to use it during their time at camp.

We train our staff to: remind girls to apply bug spray, remind them to perform self-checks while showering, and to be aware of any bugs they might see attached to a camper. Staff are taught about the symptoms of Lyme in order to alert our healthcare team should they notice signs in a child, however symptoms may not show up until after leaving camp so we urge all parents to educate themselves as well. Lyme is easily treatable when detected early, though prevention is the best policy. Please keep this information in mind while you are preparing and packing for camp this summer.

We can't wait to be back outside in our favorite place for the summer!

**** Please see enclosed flyer for more details.***



SPRING FLING!!!

On May 5th, new and returning Kippewa girls met up in New York for our annual "Kippewa Spring Fling." It was a great opportunity for returning campers to reunite, new campers to meet other girls coming to camp, and for everyone to get to know some of our amazing staff. Everyone enjoyed playing human Bingo as an opening ice breaker, and then we broke into small groups to participate in a sampling of Kippewa's World Records. We also met with parents to talk about the upcoming summer. New friendships were formed, old friends were reunited, and Kippewa girls enjoyed a great introduction to camp. It made all of us even more excited for the summer!



CAMPER GET-TOGETHERS



Olivia R., Jolie L., Caitlin N., and Hannah B., enjoy a sleepover reunion!

Avery G. and Logan S. find each other on the slopes while skiing in Stowe!



Phone Scheduling

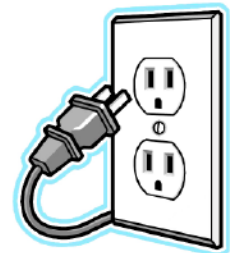


Our telephone policy allows parents to speak to their daughter one time during the session. You can schedule a phone call through your myKippewa account after June 20th. Calls will begin the second week of camp. To set a reservation, log into your myKippewa account and click the Phone Reservations link. You can select one, 10-minute time slot per camper from the dropdown menu with available dates and times. If you want to change your time, go back into your account and change your time slot.

If there is an unexpected change in our camp schedule that creates a conflict we will contact you about a time to reschedule the call. If your daughter has a birthday while she is at camp she can receive a special "birthday call." Please contact our office to book that additional time slot or for any other exceptions. Calls are limited to parents only (please advise grandparents and other relatives).

TECHNOLOGY AT CAMP

One of the things we love about camp is the break we get from the constant noise of the internet and cell phones. Camp is a great place to free ourselves for a short time of many outside distractions and just be in the moment and enjoy things like the lake, campfires, dancing, face-to-face interaction, and forming friendships. We have seen year after year how much campers really respond to this freedom and love being able to dive into hands-on projects and activities. This is one of the reasons we value our technology policies and have them in place. Just as a reminder, no cell phones, iPod touches (or any smart device which can also access the internet), or Apple watches are permitted. This rule is in effect on all camp transportation as well, so please just leave the phones at home! Any phone brought to camp will be held in the office with the camper's name on it and returned to them when they are either picked up on the last day or dropped off via camp transportation. We strongly value organic relationships, and being tech-free for a few weeks really can feel great!



NEW FOR 2019: We will be providing music devices for all of the cabins so the girls will have access to music even if they are unable to bring an mp3 player of their own. We recognize it is increasingly more difficult to play and load music without having access to the internet, and the devices we allow can be hard to find. Providing players for the cabins is our way of helping to still have music at camp without changing our policy on electronics.



2019 UPDATED PACKAGE POLICY



Kippewa has a **NO PACKAGE POLICY**. If you need to send a larger essential item (such as forgotten shoes or bedding), please email office@kippewa.com with the subject line "Package Approval Request."

Flat envelopes up to 9"x12" are allowed. It is okay to include flat, camp friendly items such as stationery, age appropriate magazines and stickers. Please do not send any food, bunk gifts (gifts for everyone in the bunk) or other similar items.

We do not allow boxed packages or puffy (non-flat) envelopes. This includes items sent directly from an outside vendor such as Amazon. Unapproved boxes and stuffed envelopes will not be opened and will be returned to sender or held until the end of camp. All large, flat envelopes and pre-approved boxes will be opened by our staff, and any food or restricted items will be confiscated.

We ask that you inform all friends and family members who might be inclined to send a package of our policy. The only exception to the package size-restriction is for birthdays during camp. Please call us if you plan on sending a birthday package. Food items and bunk gifts (gifts for everyone in the bunk) are not permitted in birthday packages.

MEDICATION/VITAMIN POLICY REMINDER

Please note that prescription medication or vitamins that will be taken during the summer must be dispensed through CVS Pharmacy's medication distribution system. This applies to all pill-form medication and vitamins that campers take regularly. Using CVS increases the safety and reliability of your daughter's medication administration. A separate letter is available in your myKippewa account regarding the procedures with CVS. Our nurses will pick up your daughter's medication and daily vitamins from CVS before camp opens.



NO PRESCRIPTION MEDICATION OR DAILY VITAMINS WILL BE DISPENSED TO CAMPERS BY OUR NURSES UNLESS THEY ARE PRE- PACKED BY CVS.

Any medication not covered by CVS, such as liquid medication, drops, and inhalers must be sent to camp one week prior to arrival day. Make sure you include any regularly taken medications in your daughter's online health history form - this is our master record that tells us what medications to give each child and it must be filled out prior to her arrival.

All medication and vitamins, with the exception of inhalers and epi-pens, must be kept in the health center. Any self-administered medication, such as inhalers, require a parent and doctor's signature on the Self Administer Emergency Medication Form. Please send two inhalers and/or epi-pens with your daughter (one for her to keep with her and one to be kept in the health center.)



1 Kippewa Drive
Monmouth, Maine 04259



Important Dates for Summer 2019

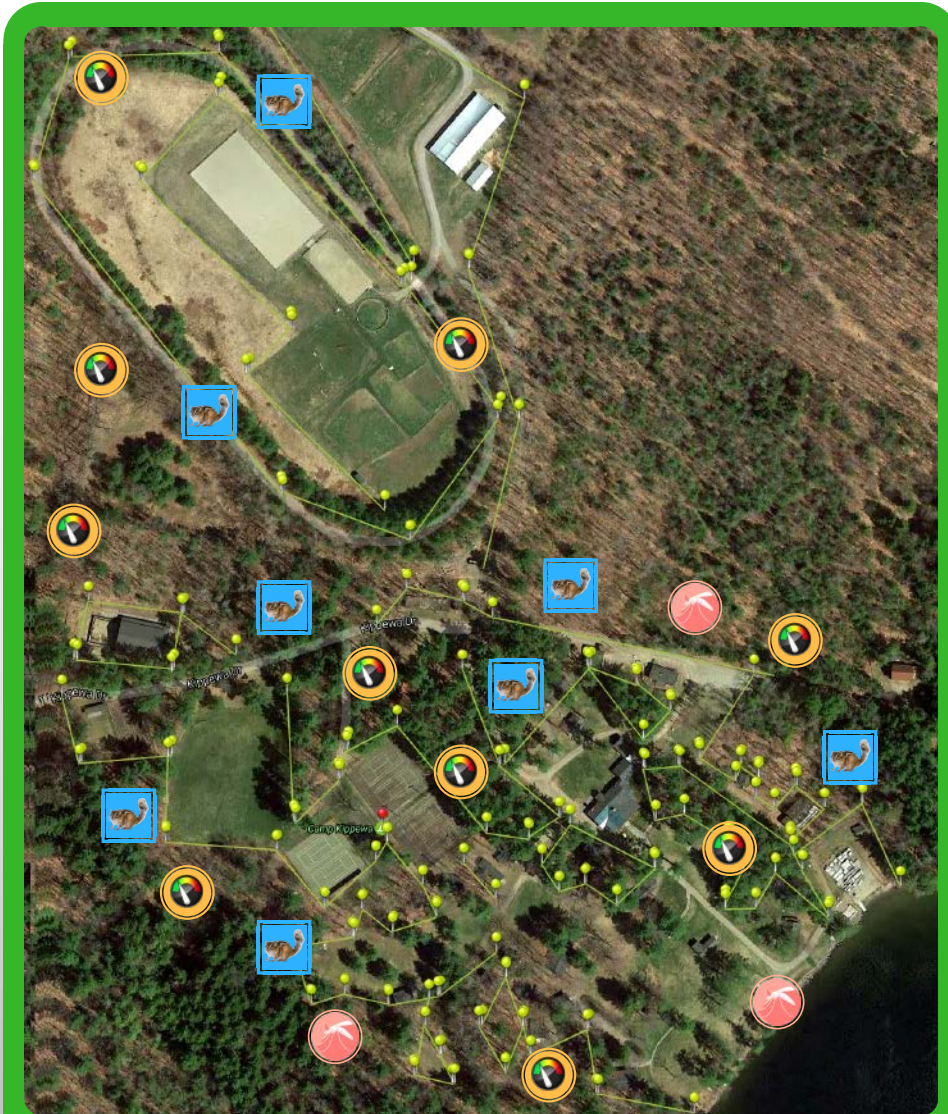
1st SESSION..... Thursday, June 20 - Sunday, July 14
1st VISITING/PICK UP DAYSunday, July 14
2nd SESSION.....Wednesday, July 17 - Saturday, August 10
2nd VISITING/PICK UP DAYSaturday, August 10
FAMILY CAMPSunday, August 11 - Friday, August 16

www.kippewa.com • 1-800-547-7392

ARE YOU RECEIVING OUR EMAILS?
If not, check your junk mail!

Please set your filters so anything sent from @kippewa.com is marked safe and will end up in your inbox.





Camp Kippewa has implemented our most advanced program.



Tick Population Measurements

Stations are deployed to measure tick population levels. Each station releases odors that attract ticks. The data gathered from each station helps determine where ticks are most concentrated which allows us to implement a more effective and targeted control program as well as monitor population reductions.



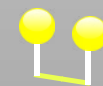
Host-Oriented Tick Control

Rodent & Chipmunks generally transmit Lyme disease to ticks which is later passed to humans. We have strategically installed devices which treat rodents fur with a liquid to prevent ticks from hosting. The process is similar to flea & tick medication applied to pets & does not harm the rodent. This method shifts rodents from infecting ticks with disease to instead exterminating ticks. Yes, the chipmunks & mice here help control ticks.



Tick Population Lab Analysis

Collected ticks are laboratory tested to determine if any are infected with diseases such as Lyme & similar illnesses allowing us to monitor infection rates.



Perimeter Treatment Zone

The neon yellow lines represent our perimeter treatment zone that we inspect monthly for poison ivy, mosquito breeding activity, and proactively treat for control. This established a protective barrier surrounding activity areas where threats are suppressed.

Ivy Oaks Analytics is a public health control company servicing large commercial areas. All products used are EPA approved for recreation areas. While our program achieves a very high level of control we cannot guarantee 100% of ticks, mosquitoes and poison ivy will be eliminated in such large areas.

For more information visit: www.IvyOaksAnalytics.com

CERTIFIED CAMP

MOSQUITO & TICK CONTROL POISON IVY CONTROL

IVY OAKS ANALYTICS
Proud Partner



Mosquito Abatement

We survey the entire property for stagnant water bodies which are analyzed for mosquito breeding. All potential breeding zones are monitored while active breeding zones are treated with a natural product for control.