

# THE KIPPY GAZETTE

Spring 2022

## A LETTER FROM THE DIRECTORS



Greetings, Kippewa Families!

We hope this spring weather is finding everyone with a smile on their faces. Spring is our favorite time of the year. We love seeing the world awaken after the cold days of winter. We love the sights and feelings of increased sunshine, warmer air, flowers and birds singing... and, we love knowing that after spring comes summer!! This summer is going to be here

before we know it. We are busy with our camp preparations getting things in place for the amazing summer sessions ahead. We know you are also busy with your own preparations - forms, clothing, packing, writing with pen pals, and more!

This newsletter has great information to help you prepare for camp. Important reminders and program highlights, and some things to look forward to as well. One thing we want to point out is the importance of May 1st, 2022! This is the day forms are all due (and we really, really do need them by this date!), AND it is the date of our virtual Spring Fling! We hope we have a great turn-out of both new and returning campers who join us to talk about Kippewa, and get to know each other.

Keep your questions coming so we can help as you prepare for the summer ahead. We can't wait to see everyone in Maine starting in just a couple of months!

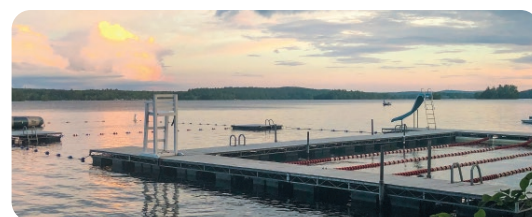
WARMLY,

*Elinger & Swie*



## WHAT'S INSIDE

Spotlight on Steph Callen.....	2
CIT and JC Programs at Kippewa .....	2
Camper Get-Togethers .....	3
Camper Corner.....	3
Winter Wiggle Recap.....	4
Keeping Our Lake Healthy and Beautiful.....	5
Brother Camp Update from Camp Cobbossee.....	5
Returning Staff .....	6
Summer Prep Reminders.....	6
New Additions at Kippewa.....	7



## Important Dates



**May 1:** All Forms & Documents due

**May 1:** Virtual Spring Fling! Details will be sent via email.

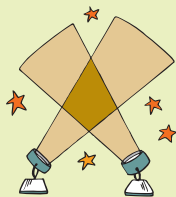
**May 20:** Send all mail to our summer, Maine, mailing address

**First Session:** June 23 - July 17

**Two Weeks:** ends July 7

**Second Session:** July 20 - August 13

**Two Weeks:** ends August 3



# Spotlight on Steph Callen

**FORMER KIPPY CAMPER AND CURRENT OPERATIONS DIRECTOR!**

Steph Callen is our Operations Director at camp, but her career at Kippewa started a long time ago! She first came to Kippewa in 1996 as a 12 year old camper, and enjoyed three wonderful summers. As soon as she was able to, she applied to work at Kippewa in 2002 and after her freshman year of college, Steph returned to Monmouth as a lower senior bunk counselor. She spent her days teaching sailing - a skill she first learned at Kippewa as a camper! Steph spent 2 summers working at Kippewa - and even one summer working at Cobbossee. Though after college Steph briefly moved on to a career in finance, Kippewa remained a huge part of her life and in 2010 she found her way back to camp as the Trips Director. The "real world" beckoned for a couple of years in between, but in 2018 Steph officially joined the year-round team - a real dream come true! Now Steph spends her winter days preparing for her summers on the shores of Lake Cobbosseecontee. She describes Kippewa as her home away from home, and feels so lucky to be a lifelong Kippy girl!



## CIT AND JC PROGRAMS AT KIPPEWA

We are excited to announce brand new Counselor-In-Training (CIT) and Junior Counselor (JC) programs at Kippewa! CITs will be entering 11th grade, the summer following their OC year. JCs will be entering 12th grade, getting ready for their final year of highschool and thinking ahead to college! We will have a few JCs with us at camp this summer and look forward to welcoming CITs in the years to come.

The CIT summer is the first summer our campers can start making the transition to being a counselor. CITs will join us for a full session at camp, living together in their own cabin and starting to learn what it's like to be a counselor at Kippewa. There will of course be a lot of fun bonding with each other, a few days exploring Maine as a group, and plenty of time back at camp working on leadership skills and learning about being a counselor. They will be paired up with one of our junior cabins and will assist in teaching some activity areas and planning some of the evening activities or special events at camp. We will also work in time to enjoy some of their favorite activities on their own! CITs will start gaining experience and insight into what it means to be a Kippewa counselor.

The JC summer is a hands-on role, living with a bunk of campers, and really experiencing life as a counselor. Our Junior Counselors will receive additional support and guidance throughout the summer as they take on the amazing responsibility of leading and supporting our campers. This is a paid position at camp. Former Kippewa campers will need to apply to be a Junior Counselor, acceptance is not guaranteed. Previous participation in the CIT program isn't mandatory, for now, but it is recommended as it will help us recognize which applicants are ready to take this next step. Those who successfully complete the Junior Counselor program can then apply to be a counselor at Kippewa a year earlier than usual - as a rising college freshman.

We hope you will start thinking about how these options might fit into your future summer plans.

**We are excited to provide a pathway for our Kippewa campers to learn and prepare for taking the next steps in their time with us at camp!**

# CAMPER GET-TOGETHERS

Check out these Kippy girls meeting up in the off season! We love seeing all of these camp friends spending time together. Whether in-person or virtually, our Kippewa community always finds a way to be together!



Birthday and Halloween meet-ups are always fun!



Zoom Bingo was a blast! Thanks to everyone who met us online to play.

*Send us your photos of get-togethers for future newsletters!*

## Camper Corner

**“More Than Just a Place”** A poem by Georgia S.

The campers come to you when the days are long, to laugh, to cry to sing a song.  
In some parts your great horses roam, in others clay and vases are thrown.  
Drawing, painting, theater too, all these things make us long for you.  
From your great lake of freezing cold, to the warm cabins, where sweet stories are told.  
In the hearts of the kids, and the counselors too, there will never not be space for you.  
For some to climb trees, for others to play ball, you will always be a home to us all.  
More than just a place.



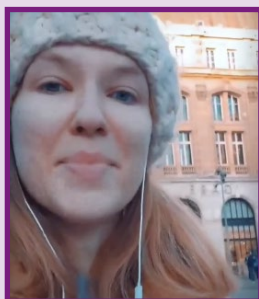
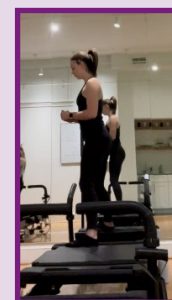
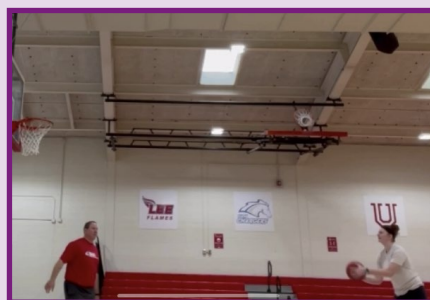
\* Camp's editorial note  
- We love Georgia's poem and wanted to share it with our Kippewa community. We are impressed with her beautiful description of Kippewa. We felt the need to defend our precious lake though - it averages 75 - 80+ degrees during the summer! "Freezing cold" is all relative.

# Winter Wiggle Recap



Thank you so much to everyone who joined in the fun of the Winter Wiggle! Our annual Winter Wiggle is a great way to bring our Kippewa community together, sharing photos and videos of how we get outdoors and stay active during the winter months. We love seeing how creative everyone is!

We also appreciate the donations to our Kippewa Scholarship Fund. Every donation helps us provide the gift of camp to families in need. Scholarship donations are tax deductible and can be made at any time throughout the year: <https://kippewa.com/kippewa-scholarship-program/>



## THE KIPPEWA SCHOLARSHIP PROGRAM:

*Kippewa's scholarship program is funded by donations from individuals, families, alumni, and friends of Kippewa. Our goal is to help as many children as possible, from a diverse range of backgrounds, ethnicities, cultures, and regions, experience the magic of Camp Kippewa. We partner with the American Camp Association to help us manage our scholarship funding. All donations are tax deductible and can be submitted through the scholarship page on our website or by mailing a check made out to "American Camp Association" with Camp Kippewa Scholarship Fund in the memo. Checks should be sent to our camp mailing address: Suite 102, #218, 265 Turkey Sag Trail, Palmyra, VA 22963.*

*A huge thank you to everyone who has already donated and those who donate to us on a regular basis. We hope even more members of our Kippewa community will help us provide the gift of camp!*

# Keeping Our Lake Healthy and Beautiful

One of the most precious natural resources at Kippewa is our lake - Lake Cobbosseecontee. For many of our campers it is a cornerstone of their experience at camp. It provides us with non-stop fun, not to mention the constant breathtaking views! It is important to us to do whatever we can to help keep this amazing resource healthy and clean.

We previously shared information with you about our Beauty Counter account and how excited we are about this ongoing partnership. We set up this account with two goals in mind.

- 1 Commit to using, and promoting usage of, mineral based sunscreen (and other products). We strongly believe in the benefits of using products that are good for the environment and for our bodies as much as possible. And we use a lot of sunscreen at camp!
- 2 Supporting our local watershed foundation - Friends of the Cobbossee Watershed. This organization promotes and protects the quality of our precious lake and the surrounding watershed district. They provide programs to educate the community (including our campers!) about the watershed and promote initiatives to keep our water clean.

**100% OF ALL PROCEEDS through our Camp Kippewa Beauty Counter account (for any products purchased) ARE DONATED to Friends of the Cobbossee Watershed foundation.**

Since we started this partnership last spring our Kippewa community has raised over \$1,200 for the Friends of the Cobbossee Watershed. This past summer we also collected cans and bottles for recycling and donated those proceeds to this foundation. Between these two programs we raised a total of \$1,334.58! Just think what we can do with the full year ahead of us.

***We appreciate your support and partnership as we continue doing our part to keep Maine beautiful!***

To access Beauty Counter visit: [www.beautycounter.com/campkippewa](http://www.beautycounter.com/campkippewa)



## BROTHER CAMP UPDATE



### Hello from Camp Cobbossee!

We can't wait to see everyone back in Maine and we hope you're getting excited to be back with your family at Camp Kippewa!

We've been working hard all winter long and this summer we're adding a new adventure element at Cobbossee. A second zipline! Our first zipline starts at our climbing wall and crosses over the football field. The second zipline will start by our tennis courts and go alllllll the way to our Cobbadome. We cannot wait!



# Returning Staff

Look who's joining us again at Kippewa!

Ailsa Ritchie  
Alan Clare  
Alexandra Monks  
Amber Mota  
Andy Longsdorf  
Brenda Larkins  
Caris Weilenmann  
Celeste Carlson  
Claudia Davis  
Daniela Jojoa  
Diana Hernandez Garcia  
Erick Herrera  
Gemma Short  
Giovanni Casarin  
Gwen Power  
Jackie Brethel  
Javier Pena Velazquez  
Javier Ramos Anzaldo  
Jessica Mandel  
Jessica Ramirez  
Jocelyn Dowling  
Kelly Rojano  
Kyra Cushing  
Laura Hernandez  
Lissa Bragg  
Luis Cernas  
Marco Antonio Pena Velazquez  
Mariela Herrera Lopez  
Marissa Lopez Ramirez  
Mary Paige Kowalski  
Megan Howell  
Melissa Ruiz Baez  
Michael Davis  
Michelle Obregon  
Moises Galvez Alarcon  
Natalie Shofner  
Niamh Simpson  
Richard Stegman  
Sarah Stevenson  
Sophia Nelson  
Stephanie Callen  
Sydney Bozeman

...and us of course,

**GINGER & STEVE!**

# SUMMER PREP Reminders



- Final payments are due **April 30th**. Invoices will be sent in April but you are welcome to pay at any time in your myKippewa account, Financial Management section.
- Forms are due **May 1st!** Please submit all forms on time in order to help us prepare for your camper's arrival.
- If you haven't done so already, **get your camper vaccinated/boosted!** All campers and staff must be up to date with Covid vaccines before coming to camp. This includes boosters for those who are eligible. Vaccines must be completed at least two weeks prior to arrival. Don't forget to upload the most recent record to your account!
- If you are going to be staying overnight in Maine, we recommend **booking your accommodations soon**. Maine is a popular destination in the summertime. Let us know if we can help in any way.
- Order your Kippewa logo clothing from Amerasport**. They are very busy in the spring with orders coming through and delivery can take longer than expected.
- All medications taken at camp must be sent through **PackMyRx** - Register with them today!
- Make baggage arrangements** by registering with either Camp Baggage or Luggage Forward. You are also welcome to bring / pick them up by car or via your FedEx/UPS account.
- Talk with your camper and let us know if they have any questions or concerns** as we approach the summer. We are here and ready to help!



# **ADDITIONS TO CAMP!**

## *for Summer 2022*



- ✓ **More Stand-Up Paddle Boards and Canoes**
- ✓ **Enhanced Turn-Out Space for the Horses**
- ✓ **Enclosed Porch of the Dance Studio**
- ✓ **New Rave Water Trampoline**
- ✓ **Re-surfaced Tennis and Basketball Courts**
- ✓ **Bathroom Upgrade for Heron's Reach**



# camp Kippewa for girls

Suite 102, #218  
265 Turkey Sag Trail  
Palmyra, VA 22963



**Get Ready for Another  
Awesome Kippy Summer!**

[www.kippewa.com](http://www.kippewa.com) • 1-800-547-7392