

THE KIPPY GAZETTE

Spring 2024

A LETTER FROM THE DIRECTORS



Greetings, Kippewa Families!

Just over one month until the start of first session! It's amazing how much takes place between now and the start of camp. Not only is nature doing its part to wake up after a long Maine winter, we soon will have

staff arriving at camp to help us with early preparations. It's a busy, and exciting time of year as we all look forward to another wonderful summer!

We hope you enjoy the updates and reminders in this newsletter. If you are interested in the plays this summer be sure to check out the Performing Arts section. Along with announcing the shows for 2024 we are making some adjustments and additions to the theatre offerings. We are also so excited about the addition to our equestrian facility, and new porches on bunks!

We know you are also busy thinking about packing and travel plans. Along with everything else, please make sure to take care of your camper forms asap if you haven't done so already. Camp activity selection forms will be posted in the upcoming weeks.

As always, don't hesitate to reach out with questions. We are ready and happy to help as you prepare for the summer ahead!

Warmly,

Ginger & Steve

myKippewa Reminder!

All camper forms were due on May 1st. If you have not completed the forms, please login to your myKippewa or Companion account and submit them to us!

WHAT'S INSIDE

Meet Our New Staff.....	2-3
Returning Staff.....	3
New Leadership Positions.....	3
Additions to Camp.....	4
Clearview Farm.....	5
Performing Arts.....	6-7
Friends.....	8
Create Your Story.....	9
Companion.....	9
Costume & Library Call.....	9
Important Dates.....	Back

MEET OUR AMAZING STAFF!



Camarsh "Crumbie" Tennis Director

I was born and raised in Montego Bay, Jamaica and currently resides in Kingston, Jamaica. As a former national representative and top-ranked junior player, I've compiled over 20 years of experience in both playing and coaching tennis. With a degree in Sports Science and Level 1 ITF certification under my belt, I'm dedicated to sharing passion for the sport. I am sincerely looking forward to meeting all the amazing people who make Kippewa such an incredible destination for everyone!

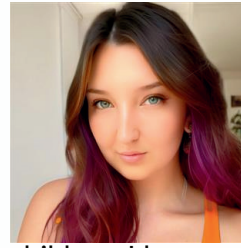
Jill Layton-Hartman Landsports Director

Hi campers! This will be my first summer at Kippewa but my second working at a camp in Maine – the first being almost 20 years ago. Yes, that makes me old-ish. I live in Long Beach, California with my wife, two kids, and cutie dog. My daughter Eloise is 7 and will be a camper for the first time, and my son Milo is 4 and will be hanging around camp. I'm really excited to be the Landsports Director as I'm a huge fan of playing sports and helping kids find their passion. When I'm not at camp, I work as a writer and enjoy hanging at the beach and hikes.



Sarah Reynolds Head of Housekeeping

I was born and raised in Hollywood, CA. I spent most of my childhood skateboarding, boogie boarding, and making my family laugh. My hobbies include dressing up in costumes, playing guitar since I was 14, singing, storytelling, and folding laundry (true story!). I have acted in many TV commercials, and I've also worked in the Arts as an Actor and musician. This will be my first summer at camp and I am so excited! Spending the summer in a community on the lake where I get to make people feel special and seen. I look forward to a sense of community with both the hospitality team and the campers/staff!



Arica Shaw Gymnastics Director

Hi, everyone! This will be my first year at camp and I am so excited. I live in Dallas, TX with my two children. I have competed for 13 years in gymnastics and dance. Now as a coach, I find joy in helping the kids achieve their goals and see their potential. I look forward to this summer in Maine!

Mike and Erica Snodgrass Waterski & Dance Directors

We're the Snodgrass family! We are so thrilled to be joining the Kippewa staff team this summer! Our story is a true camp love one, having met and dated at camp. Half of our wedding guests were friends we'd made at camp over the years. Erica comes with 20 years of camp experience, after having successfully built up the dance/yoga programs at another camp and choreographing most of their beloved lodge dances! Mike brings a wealth of knowledge from the 27 years he ran a very popular waterfront program at the same camp. We live in Vancouver, Canada, with our sweet and silly 2 1/2 year old son, Austin. During the school year, Erica works as an Adolescent Mental Health Support Worker and teaches dance. Mikey is a Carpenter, and he's currently helping build a designer home on the bluff of a cliff. We can't wait to jump right in to camp life at Kippewa!



Tamlyn Wessels Office Manager

Shoowee! I'm super excited and nervous all rolled into one! This will be my first ever Summer Camp!! I'm coming from Cape Town, South Africa to join the Kippewa family as the Office Manager this year. I've had various rolls in different industries doing admin over the years but looking forward to learning something new at camp. Other than a wife and mother of three, weekdays I'm also a receptionist at a specialist pediatric practice. Looking forward to meeting you all soon!



Hiba Yousif Cooking Director

I'm so excited to be joining Camp Kippewa this summer! Growing up in Houston, TX introduced me to barbecue, TexMex, and fusion cuisine from all of the world. After studying in St. Louis, I moved to Austin, TX where I worked as an after-school Teaching Artist and eventually transitioned to working as a barista while I continued my studies. My hope is to inspire campers to get creative in the kitchen while using nourishing ingredients. I'm looking forward to meeting everyone!

Kiley Zahn Trips Director



I am excited for my first experience at Kippewa this summer as the trips coordinator! This will also be my first trip to Maine. I have spent my whole life in southern California, where I live with my husband, two sons, two daughters, my mom, two dogs and chickens! I currently work part-time for a nonprofit that builds gardens in elementary schools and brings in educators to teach hands-on nature lessons. I am so excited to share this Kippewa adventure with my seven-year-old daughter, Sadie.

Returning Staff

- | | |
|---------------------|--------------------------|
| Aggie Schnee | Kaina Martines |
| Alex Atock | Kerry Cunningham |
| Alex Monks | Maddie Bryant |
| Anais Collins | Maggie Talesfore |
| Ashley Martin | Marissa Lopez Ramirez |
| Bianca Zani | Marni Deutsch |
| Celeste Carlson | MaryPaige Kowalski |
| Chess Gago | Meg Widmer |
| Ellie Mann | Niamh Simpson |
| Eloise Fryett | Pam Kaney |
| Emma Tinley | Paula Almonacid Lovera |
| Eva Gruenberg | Ruth Aguilar |
| Gemma Short | Sonya Friel |
| Gina Richards | Sydney Bozeman |
| Gwen Power | Tegan Hudson |
| Ivan Martinez Lopez | Tessa Kishbach |
| Ivette Torres Vela | Trinity Marshall |
| Jes Mandel | Vincent Radford |
| Jessy Ramirez | Whitney Altemeier |
| Jocelyn Dowling | Williams Merlin Trujillo |

And of course, Ginger and Steve!

New Leadership Positions

We are thrilled to announce the elevation of returning staff members to new leadership positions this summer! We cherish the opportunity to see them continue to grow and enhance their roles within our camp community.

We are excited to see the positive impact this amazing group will continue to make at camp this summer.



Sydney Bozeman
Staffing &
Operations Coord.



Marni Deutsch
Parent Communication
Coord.



Ellie Mann
Barn Manager



Maggie Talesfore
Scheduler & Fencing



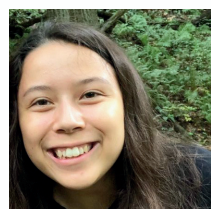
Bianca Zani
Assistant
Waterfront Director



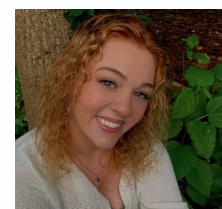
Celeste Carlson
Archery Lead & Office
Admin



Tegan Hudson
Barn Manager



Kaina Martines
Lower Senior
Div. Head



Meg Widmer
Assistant Theater Director

What's New At Camp?!



Upgraded
lights &
sound system
in the
Playhouse

Porch additions for
Possum Place and
Baileywick



Rib Sailing
Chase Boat

Improved drainage in
Equestrian riding rings



New Porch Flooring,
Dining Tables, and
Benches in the Lodge

Clearview Farm

Our equestrian facility has expanded!

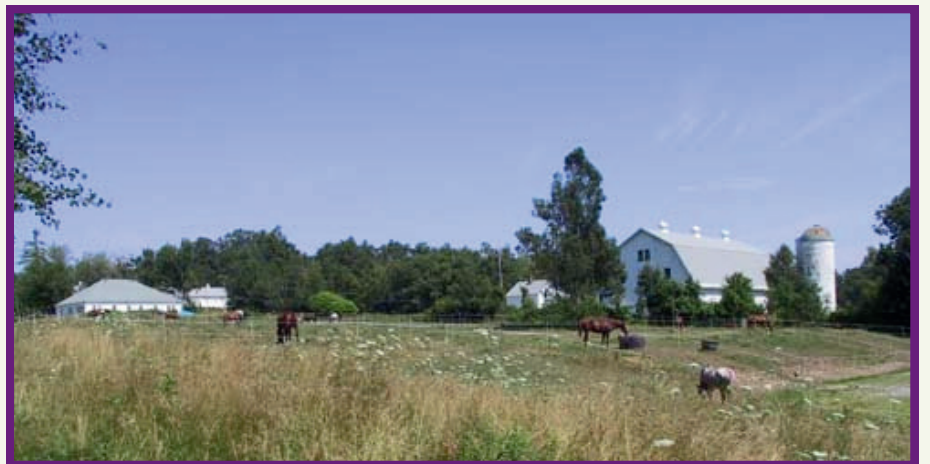
Kippewa's equestrian facility used to belong to the historic Woolworth family. They owned our stables and riding area along with much of the land neighboring camp. The family enjoyed farming alongside riding and training horses. The Kippewa Barn that our campers already know and love was the home of their standardbreds. These beautiful horses lived in our barn and pastures and trained on the 1/2 mile oval trot track that currently encompasses our riding rings and turnouts.



The land and barn next door - Clearview Farm - was a working farm operation, also owned by the Woolworth family. Over the years the barns and land were sold to different owners, but we are excited to share that we have brought them back together once again!



Kippewa now has two barns for our horses and even more land for both the horses and our campers to enjoy!



Performing

Arts

We are excited to welcome Ashley back as our Performing Arts Director again at Kippewa, together with Meg as her assistant. Following the success of both Newsies Jr and Matilda Jr last summer, we are looking forward to amazing performances once again in the Kippewa Playhouse! There are a few changes to the way that the theater classes are structured so please check out the details below. We hope this will help everyone when choosing activities in the upcoming weeks.

CAST ROLE OPTIONS:

We know there are varying amounts of time that our campers want to spend focused on the play while at camp. So now, you get to choose! You can choose to be in our "MAIN CAST" with a larger role in the show, and spend two activity periods in rehearsal. One period with other main cast members only, and another with the whole cast. Alternatively, you can choose a smaller role or ensemble part, you will then spend one activity period in our "WHOLE CAST" rehearsal. Show announcements will include which roles fit under each category so you can make the most informed decision. Either choice will be fun and you will be a complete part of the cast, we just want to allow additional time for performers who want to focus more of their time on stage while at camp. We will hold auditions on the first full day of camp, so you are welcome to learn songs from the shows for characters you would like to audition for!



ACTIVITIES:

Technical Theater (*new!): Learn how to work with the technology we use to put on a production. Whether it's the lights, music, or special affects you can get involved in the technical side of theater. One camper will actually run the lights, and one camper will run the sound for the performances.

Stage Craft (*new!): Take part in building the sets and props for the upcoming performance. You may also help out backstage during the productions.

Drama: We will still also offer our Drama class for those who are interested in theater but don't want to commit to being in a full production. Classes will work on small skits or scenes and will perform them at our weekly campfires!

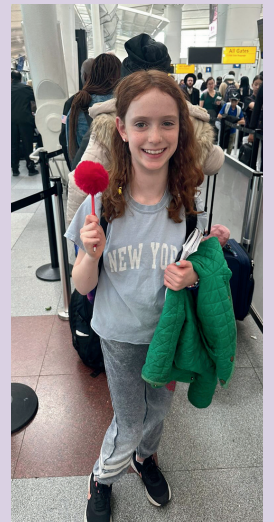


Dance Program: We are thrilled to announce an addition to our Performing Arts team this year - Dance Director Erica! Erica and Ashley are looking forward to working together this summer. They share equal levels of passion for their respective disciplines and are excited to collaborate on the shows with choreographed dances and music. We will be offering additional Dance classes for even more fun for our campers.

GET READY FOR THE CLASSICS! INTRODUCING OUR 2024 SHOWS...



Friends *always be* We will Friends Friends Friends



Create your own summer story!

I can hardly believe it! School is almost over and there are _____ days
(number)
until camp begins. This summer, I am going to _____!
(camp name)
This will be my _____ year at camp.
(number)

Thinking about camp has me feeling _____. They offer so many
(emotion)
activities that are fun! Some activities that I am excited to try are
_____, _____, and _____.
(noun) (noun) (noun)

I can't wait to sing and dance in the Lodge with friends to _____,
(favorite song)
while eating my favorite camp meal, _____. This summer is
(favorite food)
going to be the best summer ever!



CAMPANION

We are excited to offer access to Campanion for camp families! You can complete forms (including scanning paper forms and your insurance card for upload), and this summer you will be able to view photos and send emails to your camper.

Download Campanion today!
Use your same login info that
you use in your myKippewa
account to sign in.



Costume & Library Call



Since starting our Kippy library, donations from our Kippewa Families have helped it flourish into a beloved part of camp culture. We're expanding our collection and welcome any old books you'd like to donate.

We are always looking for additions to our costume department and we need your help! Before taking that old prom dress to Goodwill or tossing out Grandpa's plaid jacket, please send it to use at camp. We welcome any clothing and/or accessories that you would like to share with our playhouse. Kippy's future thespians appreciate your help!





Suite 102, #218
265 Turkey Sag Trail
Palmyra, VA 22963



Important Dates for Summer 2024

FORMS DUE	Wednesday, May 1
1st SESSION	Thursday, June 20 - Sunday, July 14
2nd SESSION	Wednesday, July 17 - Saturday, August 10
FAMILY CAMP	Sunday, August 11 - Friday, August 16

www.kippewa.com • 1-800-547-7392